



**KEEPING
BRISTOL
SAFE**
PARTNERSHIP



Annual Report

2021–2022



NHS
Bristol, North Somerset
and South Gloucestershire
Clinical Commissioning Group



Contents

Foreword	3
Introduction	4
Demographics	5
COVID-19: what it has meant for safeguarding in Bristol	9
KBSP Governance and Resourcing	11
KBSP Effectiveness	12
Learning from statutory reviews	17
Quality Assurance Activities	19
Participation, Engagement and Communication (PEC)	28
Our priorities going forward into 2022/23	29
Appendix 1: KBSP Structure and Budget	30
Appendix 2: KBSP Training and Development	31
Appendix 3: The Work of the LADO	34
Appendix 4: Safeguarding in Education Team	37
Appendix 5: Local Authority children's Data	40
Appendix 6: Local Authority Adults data	54
Appendix 7: Avon and Somerset Police Data	57

Documents available in other formats:

You can request alternative formats of this document by contacting the Keeping Bristol Safe Partnership at:

kbsp@bristol.gov.uk

Foreword

Firstly, welcome to this, our second combined Annual Report and thank you for your interest in the vitally important subjects of safeguarding and protecting children, safeguarding adults with care and support needs and keeping our communities safe.

The report is published by the Keeping Bristol Safe Partnership which includes the three statutory safeguarding partners (Bristol City Council, Avon and Somerset Police, and Bristol, North Somerset, South Gloucestershire Clinical Commissioning Group (BNSSG CCG), who are responsible for putting in place effective arrangements to support the co-ordination, quality assurance and continuous improvement of activity to safeguard children and young people.

The partnership is also constituted to discharge its duties in accordance with the Care Act 2014 statutory guidance to safeguard adults with care and support needs and includes the Probation Service and Avon Fire and Rescue as the additional two responsible authorities, who alongside the other strategic partners are responsible for the delivery of duties under the Crime and Disorder Act 1998 to keep communities safe. The executive also benefits from the membership of a lead education representative and representation from the voluntary and community sector.

The independent chair of the executive group and partnership facilitates key meetings and acts as a 'critical friend' to scrutinise and support the evaluation of the quality and impact of safeguarding activity in Bristol.

This includes chairing the executive meetings which are held seven times throughout the year.

This report sets out the progress made by the strategic safeguarding partnerships during the period 1 April 2021 to 31 March 2022 despite the challenges and impact of the COVID-19 pandemics, which continues to impact on our local services.

The strength of relationships between practitioners and leaders at all levels has been built upon, allowing multi-agency working to adapt dynamically to respond to the rapidly shifting requirements of COVID-19. Effective joint working continued and in particular partners had to adopt new ways of working. The partnership is actively considering the value and sustainability of some of these new models, alongside scrutinising whether a return to previous methods would add value or be considered a backward step. This will take further time to fully evaluate.

Finally on behalf of the Keeping Bristol Safe Partnership Executive, thank you to the whole workforce that makes up the partnership for the extraordinary work you have done in 2021–22. Your commitment and professionalism have been outstanding, and we recognise what a truly challenging year this has been for you all.



Introduction

This is the combined annual report for safeguarding children, adults and communities for the Keeping Bristol Safe Partnership, which was established in September 2019.

The Executive Board oversees the multi-agency safeguarding arrangements for children (formally the Local Safeguarding Children's Board LSCB), Safeguarding Adults Board (SAB) and Community Safety Partnership (CSP). These safeguarding arrangements include statutory duties to safeguard and promote the wellbeing of children as required by Working Together 2018, to help and protect adults at risk of neglect and/or abuse as required by the Care Act 2014; and to protect our local communities from crime and to feel safe in accordance with the Crime and Disorder Act 1998.

The partnership also fulfils the requirements of the Domestic Abuse Act 2021 in delivering the Domestic Abuse Partnership Board and holds the local responsibility for the Serious Violence Prevention Board which coordinates the delivery of the Bristol spoke of the Avon and Somerset Violence Reduction Unit.

The partnership comprises a core membership of statutory partners from Bristol City Council, Avon and Somerset Police, the Integrated Care Board, the Probation Service and Avon Fire and Rescue Services. These safeguarding partners are required to name other relevant partner agencies that they consider appropriate to work with in exercising safeguarding functions, and those relevant partner agencies have a duty to co-operate.

For the KBSP this includes representation from education and schools and a range of health providers, criminal justice services, voluntary and third sector organisations who work across Bristol and play a pivotal role in supporting the partnership with improvements across Bristol's safeguarding system.

The past year has been both an extraordinary and challenging year for the partnership because of the second year of the coronavirus pandemic and rising pressures with increasing cost of living. The safeguarding partners have been required to make some difficult and pragmatic decisions as they have navigated through exceptional circumstances to continue safeguarding the citizens of Bristol effectively.

I have had the privilege to observe the tireless work of the KBSP and it's partners and on behalf of the partnership I extend my thanks and appreciation to Bristol's local agencies for their ability to quickly adapt their delivery models in response to the pandemic to ensure that services have continued to be delivered to our most vulnerable citizens.

Ivan Powell

Independent Chair and Scrutineer

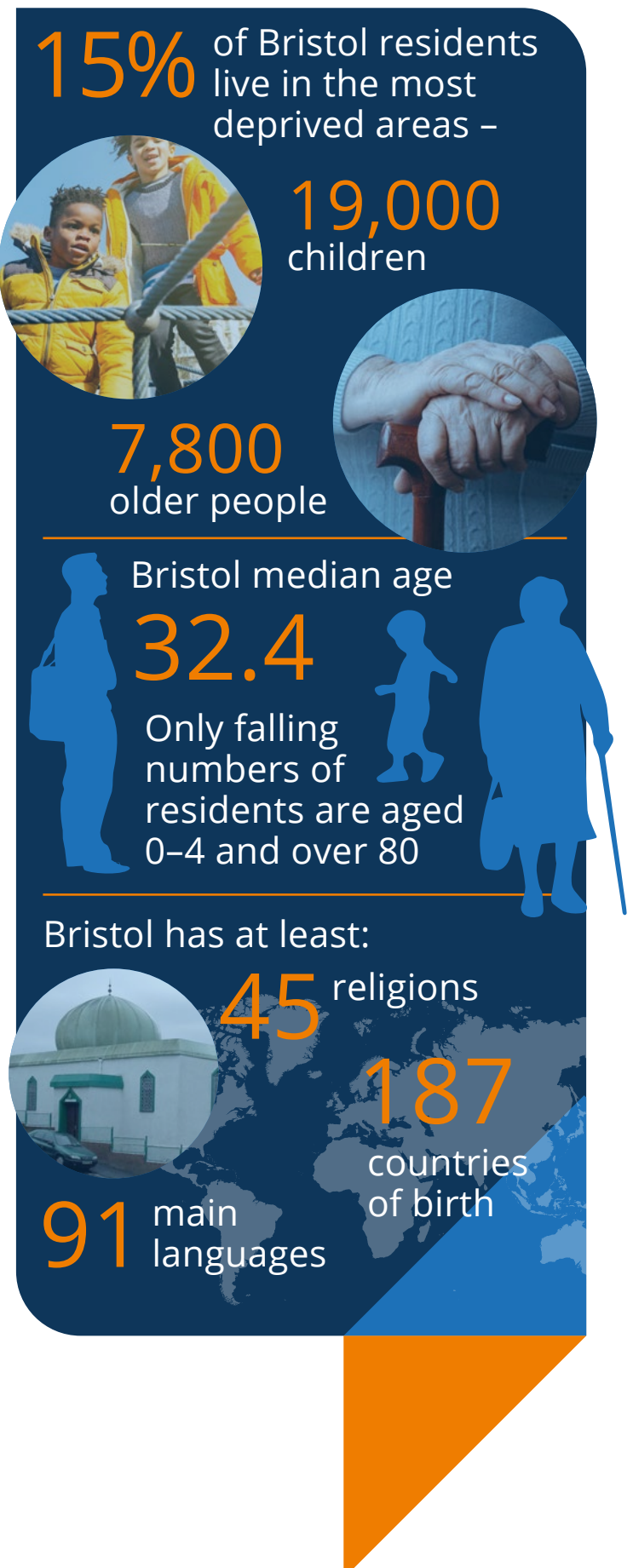
Demographics

Bristol is the largest city in the South West and one of the 11 'Core Cities' in the United Kingdom. With a population of 472,400 in 2021, Bristol was the fastest growing of all the Core Cities in England and Wales over the last decade.

Bristol has 41 areas in the most deprived 10% in England, including three in the most deprived 1%. 15% of our residents (70,800 people) live in these most deprived areas including 19,000 children and 7,800 older people.

Bristol has a relatively young age profile with more children aged 0–15 than people aged 65 and over. The median age of people living in Bristol is 32.4 years compared to 40.3 years in England and Wales. Between 2011 and 2021, the population in all age groups increased in Bristol except for 0–4-year-olds which fell by 3,700 (12.6%), reflecting falling birth rates since 2012 and people aged 80 and over which fell by 850 (4.9%), opposite to the national trend. The largest increase in Bristol was in those aged 30 to 39 years, which grew by 14,800 (22.2%), compared to a rise of 9.6% in England and Wales overall. There are currently 9,000 people living in Bristol aged 85 and over.

The population of Bristol has become increasingly diverse, with at least 45 religions, 187 countries of birth and 91 main languages spoken. The proportion of the population who are not 'White British' increased from 12% (2001) to 22% (2011), with 6% White Minority Ethnic, 6% Black, 6% Asian, 4% Mixed and 1% Other. Recent data on school pupils shows that the percentage



of pupils who are not 'White British' has increased from 31% in 2011 to 38% in 2021. 70% of Bristol residents citywide feel that *"people from different backgrounds get on well together"* in their local area, for residents in the most deprived areas this was 57%, a rise from 52% previously (QoL 2021/22)

Bristol's population life expectancy for women is 82.7 years and for men 78.5 years (2018–2020) both are lower than the national average. The inequalities gap in life expectancy between the most and least deprived areas in Bristol is 9.9 years for men and 6.9 years for women.

Bristol has a higher proportion of working age (16–64-year-old) people than nationally – 69% of the total population in Bristol is of working age compared to 62% in England and Wales. The highest proportions are amongst the 20–34-year-olds which make up almost a third (31%) of Bristol's total population compared to 20% nationally.

Many of the people in this age group will be students living in Bristol during term time. In 2020/21 there were 64,200 students in total registered at the two Bristol universities – 29,800 at the University of Bristol and 34,400 at the University of the West of England (UWE) 51. Over 5 years there has been an increase in university student numbers of 14,600 (29%). The number of overseas students has trebled over the last 20 years and now make up 27% of all students at the University of Bristol

Bristol's 85,700 children make up 18.4% of the total population, slightly lower than England and Wales at 19.1%. 15,300 children under 16 are living in relative low-income families, which is 17.8% of all

70%

feel that people from different backgrounds get on well together



Life expectancy:

78.5

men

82.7

women



64,200

students in total registered at the two Bristol universities



29% increase over five years

85,700

children in Bristol



17.8%

living in relative low-income families



children. Bristol has the highest number of children living in poverty in the South West with 21% of our young people living in deprived areas.

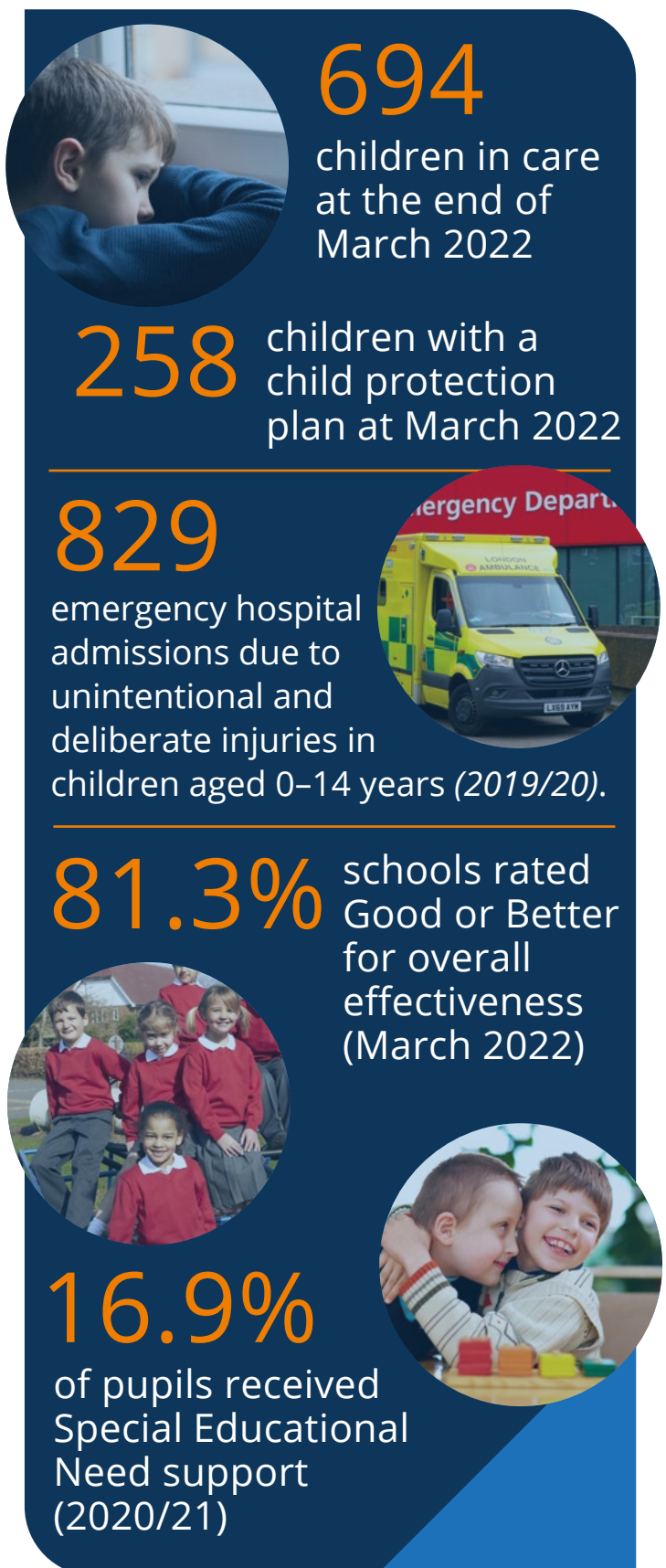
There were 694 children in care at the end of March 2022, a slight increase on the previous year. The number of children with a child protection plan also increased, from 215 last year to 258 at March 2022.

In 2019/20 there were 829 emergency hospital admissions due to unintentional and deliberate injuries in children aged 0 to 14 years. This is a rate of 102 per 10,000 children aged 0–14, significantly above the England average of 91 per 10,000.

Among young people aged 15–24 years there were 1,219 injury admissions a rate of 158 per 10,000 population, significantly higher than the England average of 131 per 10,000.

Injury admission rates in young people in Bristol have risen in recent years, the highest causes being intentional self-poisoning or self-harm. Children and young people in Bristol have higher than national rates of hospital admissions for mental health conditions and for self-harm.

For many children and young people in Bristol education represents a positive and happy experience where they do well, progress into further or higher education and move into the workplace. For some this is the opposite, turning things around for our most disadvantaged and vulnerable learners represents our greatest challenge. Of the 150 schools in Bristol inspected by OFSTED (March 2022), 122 schools (81.3%) were rated as Good or Better for overall effectiveness. In 2020/21 (academic year), 16.9% of Bristol pupils received Special



Educational Need (SEN) and 49 receive support or have an Education Health & Care Plan (EHCP). Significantly fewer young people in Bristol go on to Higher Education (31.6% compared to 42.2% in England).

In Bristol we recognise that caring for our young people stretches beyond the home. Children and young people deserve to grow, learn, and play in communities, and have friendship groups and spaces which nurture and support them to flourish and meet their potential. We know that when harm happens to children and young people in the community it can be as impactful on their opportunities and development as harm within their families and homes. The partnership saw an increase in serious violence incidents in the city at the start of the 2021-2022 as the city came out of lockdown. The interventions delivered by services across this time have contributed to the peak reducing, and we aim to continue to work together towards our vision of a safer city for all our citizens.

The KBSP has been working with the University of Bedfordshire in piloting the implementing of a contextual safeguarding approach to support our young people

at risk or victims of criminal exploitation and/or sexual abuse, including a city-wide system review including thresholds and assessment frameworks which now include peer groups, locations and premises. We believe this approach will lead to the earlier identification of young people at risk of violence and exploitation and reduce their risk of harm and becoming known to criminal justice services.

The rate of first-time entrants to the Youth Justice System in Bristol in 2021 was 215.7 per 100,000, which is higher than the national average, though the gap between Bristol and England is gradually reducing and is significantly narrower than in 2010. Rates of people whose day-to-day life is affected by fear of crime has risen to 19% (from 16% the last two years) and is now 36% in the most deprived areas of the city (QoL 2021/22).

There were 2,482 recorded hate crimes in Bristol 2021/22 an increase of 28.9% when compared to the previous year. Over 71% of hate crime in 2021/22 was recorded as racial prejudice, followed by sexual orientation (12.2%) and disability (8.1%).



COVID-19: what it has meant for safeguarding in Bristol

Between March 2020 and 31 March 2022, the cumulative case rate of COVID-19 per 100,000 people in Bristol was 34,777, higher than the England rate (31,650 22). The mortality rate for COVID-19 was 246.1 per 100,000 people, and between March 2020 and 25 March 2022 a total of 804 of our citizens had died.

In terms of the disease itself, between March 2020 and 31st March 2022 there were nearly 162,000 reported positive cases, and 10,866 Bristol residents were hospitalised. Bristol started vaccinations on 8th December 2020, and as of 31st March 2022, 76% of adults (16+ years) in Bristol had had two doses and 60% had received a booster/third dose.

We know that the COVID-19 pandemic is having a disproportionate impact on children and young people and our adult populations, and this is amplified for those who face additional adversity of disadvantage or discrimination, with the pandemic exacerbating existing vulnerabilities and structural disadvantage. Bristol's [Black South West Network](#) supported BAME led businesses, organisations and communities by giving advice and guidance, and collected data to produce a report on the [impact of coronavirus on BAME](#) communities with recommendations for addressing gaps in the support available.



The tragic impact we have seen on children and families and our disadvantaged communities have brought about learning for the Partnership paralleled with changes in practice, systems, and new ways of working. During the year partner agencies found themselves having to adapt their modes of service delivery to accommodate the COVID-19 restrictions which included the withdrawal of non-essential services to respond to the needs of the pandemic. This was particularly so for Health partners, but also impacted on a range of other services normally available for children and families and adults.

Many of our children were not attending school during periods of lockdown and so were largely hidden from view. Vulnerable children were identified in accordance with government guidelines and were actively monitored by school staff and education services, but this left others, not previously identified as being at risk, without access to trusted adults during a challenging time for some families.

The impact of lockdown on family dynamics saw an increase in domestic abuse being reported, whilst the long-term impact on mental health is yet to be realised with health partners seeing an increase in mental health referrals for both children and adults during the reporting period. Similarly, we have seen an increase in adult self-neglect cases during the lockdown periods.

The partnership response during this time included increasing agile and flexible working amongst our workforce and utilising IT platforms such as Microsoft Teams, to ensure that partners continue to support children, families and vulnerable people, and engage effectively in

multiagency meetings. We also provided online training and bite size webinars which enabled practitioners from across the Partnership to access useful practice information and resources.

The changes in working practices have enabled the partnership to function well during the past 12 months of pandemic, performing its safeguarding duties, including the successful completion of Section 11 statutory audits and the completion of rapid reviews within the required timescales.

The KBSP ran targeted campaigns during the pandemic to assist local communities with their mental health and wellbeing, provided information and signposting for financial help and assistance, and targeted support for domestic abuse, which we saw an increase in during national lockdowns. These continued through 2021–22. We also provided a dedicated [COVID-19 webpage](#) with useful information, resources and a helpline for children and families during the pandemic.



KBSP Governance and Resourcing

The Partnership oversees the delivery of its statutory duties through the KBSP Executive, which has an Independent Chair, and includes a core membership of Executive Director of People Bristol City Council, Superintendent of Neighbourhood and Partnerships Avon & Somerset Police, the Chief Executive of the Integrated Care Board, the Assistant Chief Officer of the Probation Service and the Chief Officer of Avon Fire and Rescue Service.

In addition to the five statutory partners the KBSP includes representation from the Office of Police and Crime Commissioner, a representative from the Voluntary & Community sector and Education Sector (through a nominated Head Teacher) and the Directors from both Children and Families Services and Adult Services.

The Executive is supported by a Safeguarding Business Unit which co-ordinates the work of the partnership, undertakes quality assurance activity and delivers workforce training. It also ensures the partnership legislative functions

including statutory reviews are conducted in line with requirements.

The Executive delivers its responsibilities through six key delivery groups:

- Keeping Adults Safe group
- Keeping Children Safe group
- Keeping Communities Safe group
- Domestic Abuse & Sexual Violence group
- Serious Youth Violence group
- Participation, Engagement and Communication.

A detailed structure chart and a breakdown of the KBSP budget for 2021/22 can be found at Appendix 1 of this report.

KBSP Effectiveness:

An account of progress made against the priorities set for 2021/22

In August 2019 the business functions of the Safeguarding Adults Board (SAB) merged with that of the Local Children's Safeguarding Partnership (LCSB) and the Community Safety Partnership (CSP) and became the KBSP. The work of the KBSP is co-ordinated by a dedicated KBSP Business Unit. The KBSP agreed priorities for 2019–2022 are set out in the KBSP three-year Strategic Plan which is delivered and monitored by an operational business plan. The business plan set out a number of actions needed to meet the priorities and many of the required outcomes have been met or are in progress. These include:

Priority 1: End to End Excellence – An integrated Partnership that is equipped to meet the ever-changing needs of our communities

A priority for the KBSP is the development of a multi-agency safeguarding framework and co-located hub model for adults which is aligned to the First Response Assessment Service, Children's MASH, the Lighthouse Safeguarding Unit (LSU), Multi-Agency Risk Assessment Conference (MARAC) and Multi-Agency Public Protection Arrangements (MAPPA) enabling earlier identification and improved risk management of complex

cases. A model for this work has been developed and the partnership is reviewing resources needed to pilot the MASH in the next financial year.

The KBSP also created a self-neglect task and finish group to improve the current identification and earlier intervention for adults suffering from self-neglect. This includes the improvement of pathways and a more coordinated and timely multi-agency response to complex cases.

The group has developed improved risk enablement tools and worked with colleagues in housing to improve risk compatibility assessments in all commissioned supported housing provision across the city.

The KBSP have delivered training to the partnership workforce on self-neglect and updated our multiagency guidance document and highlighted self-neglect through our regional work for Stop Adult Abuse Week.

Under this priority, the Keeping Adults Safe (KAS) Group were responsible for ensuring the effective roll out of the new guidance in relation to the Liberty Protection Safeguarding (LPS) which will replace current Deprivation of Liberty guidance. This was due to be published in October 21, but at the time of this report we are still awaiting this from central government. In the meantime, the KAS

group have scoped this work to ensure there is clear communication and training of the implementation for the workforce, and appropriate reporting for oversight of compliance with statutory legislation on LPS is in place.

The Keeping Children's Safe (KCS) has focused on improving child protection conferences by employing 'parent experts by experience' consultants, who themselves were participants in CP conferences. Through this work the partnership has introduced systemic outcome letters from conference, leaflets and information for other parents and removed 'confidential slots' from CP agendas ensuring all meetings are transparent and inclusive.

The group continue to oversee the successfully implementation of a city wide contextual safeguarding approach enabling the earlier identification and multi-agency co-ordination to tackle child exploitation, and Operation Topaz has also expanded its targeted activities to encompass both child criminal and sexual exploitation.

This year the partnership contributed to the national Contextual Safeguarding Implementation toolkit and rolled-out Contextual Safeguarding and Conflict Resolution in Peer groups training across the partnership. Bristol were also successful in receiving funding to pilot the Changing Futures Programme, which seeks to support older adolescents including those who may be at risk of exploitation.

"There was a young person I was working with and he kept getting raised at Safer Options alongside a number of other young people. What we did was gathered up all of the workers and we had a separate meeting where we did peer mapping and figured out where they were hanging out and what they were doing. I think if Safer Options wasn't there that wouldn't have been an option, I don't think we would have even figured out that that network was quite so large."

University of Bedfordshire
Contextual Safeguarding
Research into Safer Options

Safer Options is the name we give to a coordinated whole system response to prevent serious violence and exploitation. Safer Options provides an umbrella under which new initiatives are brought together to enable a coherent response to extrafamilial harm. Safer Options is Bristol's devolved violence reduction unit which is part of the Avon and Somerset-wide violence reduction partnership. In Bristol we have decided that our approach will span all forms of extrafamilial harm. Between 1 April 2021 and 31 March 2022, Bristol's First Response service received 972 contacts about 787 individual children where referrers were concerned about the child being harmed through extra-familial abuse.

“Tackling extra familial harm including exploitation and knife crime is a priority for the local authority and its partner agencies. Strong working relationship with the police have resulted in a shared culture of collaborative and child-focussed working. Children’s welfare is at the centre of practice and they are considered primarily as victims. Initiatives linked to drugs and the carrying of knives in education settings have resulted in fewer children being excluded.”

Ofsted Focused Visit, Dec 2021

The KCS group have overseen the city wide roll out of the ICON program across universal health service for protection of under 1’s, which aims to provide information and support to new parents, especially care leavers and those under 25 years.

The KCS also ensured the Statutory S11 audits were completed within the required timescales and that services continued to work to ensure compliance with core standards of safeguarding.

Priority 2: Citizens are our Equal Partners – Ensuring individuals and their choices remain the centre of all our work

The KAS group have been working with the KBSP Participation, Engagement & Communication (PEC) group to improve the voice of vulnerable adults and in making services and information accessible and more personal. The group will be

undertaking a Making Safeguarding Personal (MSP) audit in the new year to gain feedback from current service users on their experiences of using adult safeguarding services and this will be broadened out to engage with more individuals and services across the city. The KBSP website has also been improved and now meets accessibility standards.

The KCS group have devised a new mentoring training programme with City of Bristol College for serious violence community mentors and have also supported dedicated parent support workers for parents who have lived experience of Child Criminal Exploitation and a Domestic Abuse forum has also been launched to gain better insight and the views of those with lived experience in the future work of the Partnership.

Priority 3: Domestic Abuse – Commission and deliver domestic abuse services which are trauma informed and recovery focused

The Domestic Abuse & Sexual Violence Group (DASVG) was established following the new Domestic Abuse Act 2021 and oversee the delivery of the domestic abuse and sexual violence agenda on behalf of the Partnership. In 2021/22 the group successfully led the commissioning and implementation of domestic abuse services which better meets the needs of our local population. These services include trauma recovery support for adult victims including those with complex needs and support to children and for those perpetrating the abuse. Going forward the DASVG will be responsible for the development and

implementation of a KBSP Violence Against Women and Girls (VAWG) Strategy

The KBSP have undertaken quality assurance audits in relation to the effects of domestic abuse on children, and its multiagency safeguarding under 1 year's audit also identified the risk of hidden harm and domestic abuse. There are action plans in place because of these audits and a new training programme for domestic abuse has been developed for the partnership workforce, to influence trauma informed practice.

Priority 4: Seamless Transitions – Transitional Safeguarding (16–25 year-olds)

Young people entering adulthood can experience a 'cliff-edge' in terms of support during transition. The notable differences between thresholds and eligibility of children's and adults' safeguarding can mean some may be left unsupported or disengaged. There is a need to ensure appropriate support for young people who are transitioning into adulthood do so successfully.

This year the partnership scaled up the specialist response to children and young adults who have been exploited to ensure that there is access to specialist services post 18 for young people who have experienced criminal exploitation (this was already in place for young adults who had been sexually exploited).

The KBSP are in the process of creating a Transitional Safeguarding group which will include representation from vulnerable adult's services and the children and families service to improve the experiences of young people during transition. The KBSP have worked closely with colleagues in both adult and children's services looking at ways they can effectively work together to reduce risks to young people, who may not strictly meet the criteria for support under the Care Act (2014). This work is in the early stages and follows on from the government paper, [Bridging the Gap \(2018\)](#).

This group will consider the learning from our local safeguarding reviews and look at our current local population of young people and plan for their needs using their lived experience to inform individual transitional support plans and improve workforce knowledge and practice. This work will build on our contextual safeguarding strategy [Keeping Children Safe in our Communities](#) which sets out the approach for implementing a contextual safeguarding approach to improve the multi-agency identification and interventions for those at risk of child exploitation.

The Partnership will also work with commissioners and service providers in ensuring our services are fully accessible for 16–25 year-olds and in going forward involve them in the quality assurance process and in design and co-production of services.

Priority 5: Safe in our Communities, Safe in our Homes

The KAS group have been working with BCC Housing teams on a new risk management framework for supported accommodation, which was as a result of learning linked to a local SAR and DHR which occurred within a supported housing environment. The KAS also provided local supported housing providers with free adult safeguarding training to improve the identification of risk and responsive practice.

The Keeping Communities Safe group have worked closely with BCC Antisocial Behaviour (ASB) teams, Trading Standards and Licensing teams to protect local communities from financial door step and online scams and to deter drug related antisocial behaviour within

neighbourhoods. They have also been working in conjunction to with the KCS group to improve responses to serious youth violence across the city. They were also successful in applying for Safe Streets 2 funding which enabled targeted support for women and girls experiencing sexual harassment in public places, eg Harbourside location.

The Keeping Communities Safe group have also led on the development of modern slavery pathways and workforce training to improve the local use of the National Referral Mechanism in supporting victims of modern slavery and trafficking. Whilst the Keeping Childrens Safe group recently launched Independent Child Trafficking Guardians, which provide a programme of targeted support for unaccompanied asylum-seeking children who have been trafficked into Bristol from other areas in and outside the UK.



Learning from statutory reviews

Safeguarding Adult Reviews (SAR)

The SAR/DHR subgroup has had a busy year, four new SARs have been commissioned and three reviews are ongoing. There were no SARs completed or published by the Partnership during this time and therefore the actions taken will be reported in next year's annual report.

The work of the Safeguarding Adult Review group has included an audit of transitions to supported care, delivery of Mental Capacity Act training, consultation around meaningful activities for people living in the community with learning disability and promotion of mate crime support and resources.

Domestic Homicide Reviews (DHR)

During 2021/22 the KBSP have commissioned two new Domestic Homicide Reviews and have nine ongoing. The partnership completed one Domestic Homicide Review for 'Nicki', the full report and executive summary have not been published for this DHR, however a [learning briefing](#) has been published instead.

Some of the work of the Domestic Homicide Reviews group has included the planning of multi-agency domestic abuse training, the promotion of domestic abuse and sexual violence services as part of the Are You OK? campaign, learning from

a review has been shared with drug and alcohol commissioners showing the need for alternative routes to detox for those experiencing domestic abuse, and an audit of routine enquiry has taken place in GP practices.

Child Safeguarding Practice Reviews (CSPR)

"We thought your LCSPR was clear and concise with thorough methodologies, strong and detailed case analysis and clearly grounded in a robust academic framework. The LCSPR addressed some pertinent systemic issues and identified a number of helpful learning points."

National CSPR Panel,
August 2021

KBSP published a Child Safeguarding Practice Review looking at peer-on-peer abuse and child criminal exploitation on 4th November 2021. The review was undertaken jointly with North Somerset Safeguarding Children Partnership and South Gloucestershire Children's Partnership. The review focused on eight young people impacted by peer-on-peer abuse and knife crime across Bristol, North Somerset & South Gloucestershire between 2018–2021.

The review identified the following findings:

- Relationship based practice with a consistent professional network is a protective factor for young people
- Involvement with young people came at a late stage despite clear indicators of background vulnerability
- Specialist CCE resources and responses are required
- Long term work that does not end after 12 weeks is required
- Serious Violence Education Inclusion Managers were particularly effective in advocating for young people to remain in mainstream school

The review made nine recommendations for improvements across the three areas:

- Improved therapeutic provision including speech and language, mental health support
- Responses to boys under 10 experiencing physical abuse
- Innovation in supported accommodation for young people at risk of CCE
- Working towards a zero-exclusion policy in education settings
- Improved risk assessment tools
- Review of multi-agency case coordination arrangements for adolescents experiencing exploitation
- Identification and response to perpetrators of CCE, County Lines, organised crime
- Escalation to DfE & Home Office the challenge of providing consistent services and long-term support
- A regional approach to increasing safety in peer groups

Rapid Reviews

KBSP submitted one rapid review to the National Child Practice Review Panel during this reporting period. The rapid review was undertaken after a serious assault on a young person by a peer. The young person was seriously harmed but survived their injuries.

As a result of this rapid review partners have made improvements to communication with the school and PRU for dual registered children, the Education Inclusion Manager role has been promoted across the workforce so more people are aware they can provide advice and support, and access to trauma counselling for children who have been the victims of serious violence has been reviewed and social media conflict research has been shared with partners.

“We thought your rapid review was thorough with a good level of analysis and a strong set of core actions identified.”

National CSPR Panel,
Sept 2021

Partners have continued to show significant commitment to ensure this review was completed within the 15 working day timescale. The National Panel agreed with the CSPR sub-group’s decision that this case should not progress to a full Children Safeguarding Practice Review.

Quality Assurance Activities

Quality Assurance activities enable the KBSP and its partner organisations to monitor compliance with policies and procedures; evidence strengths and good practice; identify gaps and areas for development; drive learning and service improvement.

The monitoring of the KBSP safeguarding response is set out below and recorded and monitored within the KBSP Quality Assurance Framework (QAF) the QAF is reported to the Executive on a six-monthly basis at the end of Q2 and Q4.

- Multi Agency Data
- Self-Assessment audits
- Statutory Safeguarding Audits, including S11 and S175
- Multi-agency thematic audits
- Inspection findings
- Assurance reporting by partner agencies
- Service User feedback
- Evaluation of multi-agency training

The KBSP delivery groups report data and performance at their meetings, and this is reported to the Executive and the Accountability and Oversight Group on a six-monthly basis at Q2 and Q4. Further information on the KBSP data can be found in the appendices of this document.

Independent Scrutineer

The role of the independent scrutineer is primarily focussed on how well the statutory safeguarding partners are working together and with any relevant agencies and organisations, to ensure that local children are safeguarded, and their welfare promoted. The role of the Independent Scrutineer is held by the Independent Chair of the KBSP. The areas of scrutiny framework activity during this reporting period are identified below.

The continuing year on year areas of scrutiny activity are:

- Scrutiny and challenge of data provision to the board
- Observations of the COVID-19 multi-agency response for children (until mid-2022 – *see below*)
- Assurance seeking around implementation of contextual safeguarding
- Challenge to core partners on insecure funding arrangements for the partnership
- Scrutiny of decision-making by core partners in respect of rapid reviews and CPSRs and learning loop
- Engagement with child death panel in respect of findings of annual report

2021-22 Scrutiny framework activity:

At an early stage in the pandemic Keeping Bristol Safe Partnership tasked its delivery groups (Keeping Children/Adults/Communities Safe) to flex how they were operating in the way each delivery group best felt the need given their portfolio area.

On the 9 March 2021 KBSP received the national panel report from December 2020 *'Supporting vulnerable children and families during COVID -19 lockdown'*. By attending the ongoing keeping children safe group, by this time a weekly meeting of one hour the Independent Scrutineer was able to gain assurance of the effectiveness of the partnership by focussing on the key themes of:

- **An increase in parent and family stressors** – with a specific focus on monitoring trends of reporting of domestic abuse. Across Bristol whilst we did not see significant increases in reporting to police, we did see increased reporting to and importantly the access of domestic abuse support agencies.
- **Exacerbated vulnerabilities for children and young people** – it was identified that the attendance of 'vulnerable children' as set out in government guidance, at school was less than anticipated. The safeguarding in education team showed substantial leadership to this by working closely with schools safeguarding leads to explore and understand potentially increasing vulnerability. The roll out of IT provision for vulnerable children and families was a notable success. The impact of school closure was again mitigated by the joint work between the safeguarding in education team and work with schools directly.

- **Impact of adaptations for COVID-safe practice** – Bristol services had recognised at an early stage that reduction of face to face and home visiting was going to be a significant challenge at an early stage. Considered risk assessment procedures and guidance to practitioners was put in place to enable face to face contact to continue where appropriate. Continuing into 2021 -22 the multi-agency system across Bristol sought to learn from the first year of 'pandemic practice' embedding new ways of working where efficiency and effectiveness had been seen to improve, notable virtual 'home visit' where appropriate and safe to do so, and the delivery of strategy discussions. Additionally, where a return to pre-pandemic working was felt necessary that was undertaken.

During the period end of March 2021 until mid-2022, the Chair held a number of discussions regarding the preparedness for the domestic abuse act and to be implemented serious violence duty, these areas will be carried forward into year 2022-23.

In April 2021 the Chair clarified with the police lead the work to pick up the issues identified in 'Everyone's Invited' was appropriately resourced and robust.

During May and June 2021, the Chair was directly involved in the discussions with Sir Stephen Bubb who had been commissioned to conduct a review into the response of services to people with autism and was actively engaged in bringing the 'Building Rights' report for scrutiny and assurance conversations at the KBSP executive.

In May 2021 the Chair took the feedback report from the CYP Shadow Board 'Are you okay' workshop to the KBSP executive to set out the CYP 'next steps' expectation from the partnership in respect of the event.

From June 2021 onwards the Independent Chair has been in discussion with Avon and Somerset Police regarding the missing adult's framework and related protocols. This remains ongoing work being led by the police.

In June 2021, the Chair sought assurance on how the recommendations from the DA Mayoral Commission would form part of the strategic assessment work and resultant strategy and action plan. This was due to be embedded in the domestic abuse partnership board and will be subject of the scrutiny framework for 2022-23.

In October 2021 the Chair scrutinised findings from of Bristol's peer challenge report, working with police to explore plan to implement Operation Innerste and children the subject of emergency police powers intervention.

In November 2021 the KBSP published its thematic cross border review on peer-on-peer abuse report. The Chair was involved in scrutinising the progress of the report and related action planning. In addition, he met with two family members and fed back their experiences and views on the report to the KBSP executive.

In December 2021 a review of partnership consideration of and response to the Tri-Ministerial letter regarding Arthur Labinjo Hughes and Star Hobson and timeless of rapid reviews and child safeguarding practice reviews. All rapid reviews in the reporting period were submitted to

national panel on time, national panel both agreeing with conclusions of rapid review meetings but also consistently giving positive feedback on the quality of reports submitted by KBSP to the national panel.

In January and February 2022 – the Chair undertook scrutiny and contributed to Operation Scorpion, a police-led combatting drugs initiative.

Independent Scrutiny

As well as the challenge and oversight brought through the independent Chair who has held the scrutineer role since September 2019, elected members also have oversight of the KBSP performance and effectiveness through the Accountability and Oversight Group which meets on a quarterly basis and receives detailed presentations on the current performance of the KBSP against its strategic plan and operational business plan. This annual report will also be presented to this group.

The partnership is committed to involving young people and adults and works closely with the youth shadow board, whose activity this year has focussed on quality assuring our first response assessment service and campaigns to promote the mental health and wellbeing of our young people. We have also established a domestic abuse forum which provided information and lived experience to our colleagues in Public Health in the commissioning of local domestic abuse services.

Adult Self-Assessment (ASA)

The Adult Self-Assessment (ASA) Audit is a tool which is used by the Partnership to evidence and assure itself against its Safeguarding Responsibilities under the Care Act (2014) and the effectiveness of their local adult safeguarding arrangements

The five Avon & Somerset Safeguarding Partnerships worked in collaboration on the 2021/22 audit which was sent to 28 Bristol organisations. The Partnership will continue to work with commissioners and through the partnership network to annually increase involvement in the ASA process.

The ASA Report included regional recommendations based on common themes from across the Avon & Somerset Safeguarding Partnership areas and those which pertain to Bristol. These are as follows:

ASA Regional Recommendations:

- The Partnership Boards will devise a pick and mix of different resources to help assist the learning from SARs across the region. This will include learning briefings, closing the loop learning audits, useful guides to being involved in the SAR process and other learning resources pertaining to SARs.
- The Avon & Somerset Safeguarding Partnership Boards will create a regional toolkit to support the promotion and understanding of key policy and practice documents and training. This includes Resolution of professional Differences, Professional Curiosity, MCA and Best Interests, Exploitation and Transitions guidance. This work will include the development of future regional MA policy and practice documents such as a potential regional threshold guide.

- The Partnership Boards should work together to improve their engagement with adults who have lived experience and identify opportunities for them to inform and co-produce future services, policies, procedures and practice.
- The Partnership Boards should increase their scoping, understanding and responses to young and older adults who require support when transitioning into adulthood, and/or into or between adult services, with a view to providing better support in conjunction with Making Safeguarding Personal (MSP) principles, sharing effective practice across the region.

ASA Local Recommendations:

- The KBSP should consider working with Avon and Somerset Safeguarding Partnerships and Boards to review the learning of how the Resolution of Professional Differences multi agency policy is disseminated and shared.
- The KBSP should ensure training and supportive resources pertaining to adult safeguarding is made available and promoted across the city. This should include multi agency training for MCA and complex Best Interests decision making. Level 2 and 3 Safeguarding training, Exploitation and Professional Curiosity.
- The KBSP should consider how to widen the reach of SAR learning across the city and QA this learning is used to improve future safeguarding policy, procedures, and practice.

- The KBSP should continue to improve their engagement with adults who have lived experience and their families and identify opportunities for co-production to improve current and future services, policies, procedures and practice.
- The KBSP should increase scoping, understanding and responses to young and older adults who require support when transitioning into adulthood, and/or into or between adult services, with a view to providing better support in conjunction with Making Safeguarding Personal (MSP) principles.
- Organisations continue to develop their YP engagement ensuring the voice of YP is heard including those who are currently underrepresented, and their feedback obtained about the services they access. Where possible YP should be included in future opportunities for co-design and co-production
- The KBSP to circulate the revised Threshold document and Escalation Guidance to all partners once review is complete.

Impact Identified:

Section 11 Audit

The section 11 audit was undertaken in conjunction with the four neighbouring authority areas of Avon & Somerset. Each Safeguarding Partnership identified three local organisations to participate in peer reviews and local reports with recommendations were published. The KBSP continues to work with commissioners and through its network to annually increase the reach off the section 11 audit across the city.

Recommendations from the Peer Reviews included:

- KBSP to continue to work with specialist organisations on workforce training themes eg, Child Exploitation, Domestic Violence and Abuse, Hate Crime etc and promote this across the city.
- KBSP should review the current practice of sharing information amongst its statutory and VCS Partners to ensure information is appropriately shared in a timely manner; with relevant feedback provided to those VCS who have contributed information, data, or intelligence.

- KBSP online multi-agency child safeguarding training and resource materials developed to reflect the latest and emerging safeguarding themes.
- Increased involvement from service users and those with lived experience to inform quality assurance activities and provide mystery shopper function.
- Despite the continued social distancing and disruption caused by the pandemic, the partnership has continued to undertake its quality assurance and scrutiny functions.

Multi Agency Thematic Audits

The KBSP has undertaken a variety of multiagency thematic audits in line with the KBSP QAF for Adults and Children and Young People for 2021/22. These are as follows:

Adult Audits

Transitional safeguarding – Christopher SAR Rec 13 audit.

This audit was undertaken in response to a recommendation from a 2018 SAR following the death of a 31-year-old male, Christopher. Christopher had complex health and learning disabilities throughout his life. He was admitted to hospital after becoming ill and losing significant weight due to refusing food and medication in his supported living provider's care. The full SAR report can be accessed via the [KBSP website](#).

The purpose of the audit was to better understand the effectiveness of providers in the support provided to individual adults who may have complex needs including the escalation of concerns for those who may refuse nutrition and/or medication. To ascertain if the views and wishes of family members were considered as part of support planning process and if the workforce felt confident and adequately trained in relation to local arrangements for escalation and challenge. As a result of this audit there will be improvements in the recording of previous and historical information pertaining to refusal of medication and or nutrition and bespoke training for professionals working with complex needs to ensure they are confident in use and escalation of MCA.

Learning from SARs

The audit was requested by the KBSP Keeping Adults Safe Group to understand and improve how learning from SARs could be more effectively shared across organisations. It also includes how learning has been embedded into practice to improve outcomes. The audit considered how effectively the learning from SARs is shared within and across local organisations and embedded into practice. The training and support available for the partnership workforce who support vulnerable adults with care and support needs and the effectiveness of multiagency working, including escalation and challenge and information sharing amongst professionals to safeguard adults.

Whilst 100% of audit participants had processes in place where learning from SARs could be disseminated to their workforce the audit highlighted the need for a review of current SAR guidance to ensure timescales for the conduction of reviews was updated and circulated across the partnership. We hope to undertake this review of guidance in 2022/23.

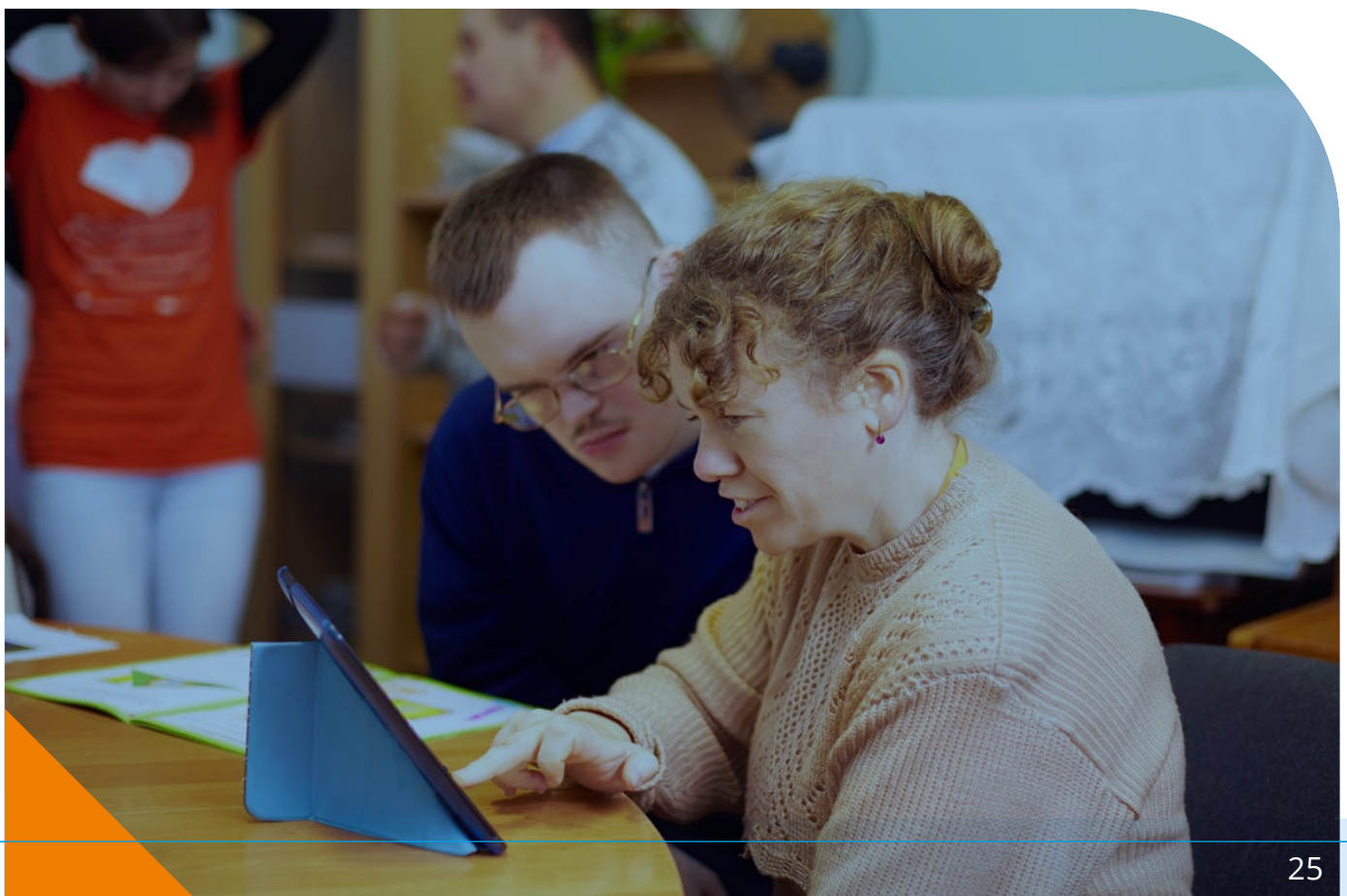
BCC Audit for Adult Social Care Risk during COVID-19

In 2021/22 Bristol City Council undertook an audit on adult social care services. The objective of the review was to provide an independent opinion and assess the progress in developing the “Keeping Adults Safe” (KAS) delivery group and how these feed into the established “Keep Bristol Safe Partnership (KBSP) as Bristol’s Safeguarding Executive. The audit included:

- Delivery of the Corporate Adult Safeguarding Risk mitigations
- Recording of care reviews and file notes recorded on LAS
- How concerns are shared with partnering organisations and what is reported to KAS and escalated to the KBSP.

The council has a management system called *Liquid Logic Adults System* (LAS) to record and report on all service users for Adult Social Care. In LAS there are embedded recording systems for adult safeguarding. The audit found improvements were needed in the timelines of recording concerns and those which followed through to a S42 Enquiry on the LAS recording system. The audit suggested data downloads were not extracting all available data from LAS and some ordinarily visible “safeguarding enquiries” may not be seen to be progressed.

The audit also identified data analyses was not included in the standard reports and currently failed to generate any meaningful management reporting. This is an area which adult social care are focusing on to ensure improvement in both the recording and reporting of accurate information for adults with care and support needs.



Children's Audits

Avon and Somerset Regional Child Criminal Exploitation Audit

In 2021 the Child Safeguarding Practice Review Panel published its national review 'It was Hard to Escape' highlighting the risk posed to children from criminal exploitation. In seeking to respond to this emerging threat and the recommendations of the report, the Avon and Somerset Strategic Safeguarding Practice (ASSSP) requested a regional audit of Child Criminal Exploitation (CCE). The focus of the audit was to look at multi-agency safeguarding practice across the five local authority areas for those children identified at being at risk of or exploited through county line networks and the current responses to protect and support them.

As a result of the audit Bristol began work with the university of Bedfordshire and undertook a systematic review across the partnership to ensure a contextual safeguarding approach was included to aid the early identification and protection of young people at risk of Extra Familial Harm (EFH), including county lines. Whilst Operation Topaz was also expanded to protect victims of both Child Sexual Exploitation (CSE) and Child Criminal Exploitation (CCE) in September 2021.

Children Affected by Domestic Abuse

In July 2021 the KBSP undertook a multiagency audit to assess the quality and effectiveness of the multi-agency response to children affected by domestic abuse, identifying areas for improvement and effective practice. The audits focus was to consider how timely and appropriately children affected by domestic abuse were

identified and systemically processed. How these cases were investigated and responded to by safeguarding partners and how timely and effective these responses were.

The audit also looked at how timely and responsive the Partnership were in identifying and managing risk of those children and how the voice of the child and their non-abusive parent was considered and heard in safety and support planning.

Following this audit, the KBSP have supported colleagues in Public Health to undertake the commissioning of specialist domestic abuse services which include trauma informed recovery services for children and young people and the co-location of specialist domestic abuse workers within children's social care. A training programme for the partnership workforce has also been designed to improve understanding of the dynamics of domestic abuse, and in using a specialist domestic abuse risk assessment tool so they can learn to identify risk and provide appropriate safeguarding support for victims and their child(ren). This training will be rolled out across the city in 2022/23.

Under 1s Audit

In November 2021 the KBSP undertook an audit to assess the effectiveness of the current multi-agency response to safeguarding babies under one. Babies under one are mostly non-mobile and as such, very rarely cause injuries to themselves, and therefore considered at significant risk of abuse and harm. The audit considered the national analysis of under one safeguarding reviews and subsequent Child Safeguarding Practice

Review Panel report 'National Review of Non-Accidental Injury in under 1s' and focused on how effectively the KBSP safeguarded babies up to one year. This included how timely they were identified and systemically processed, and the impact of Covid 19 restrictions on the ability of Partnership agencies to identify and respond to safeguarding this age group.

The audit highlighted gaps in information being recorded on the father or partners of the mothers, and the importance of improving professional curiosity and

routine enquiry regarding these fathers/ partners. It also highlighted the need to improve discharge planning both in terms of the immediate recording of information on mother and baby health records and in recording professionals who had been invited and attended discharge meetings as this had significantly reduced due to Covid 19 restrictions. The audit also requested that risk assessment tools were promoted and the strengthening of Domestic Abuse Services and Children Services safety planning within CP/CIN assessments and plans for domestic abuse were aligned.



Participation, Engagement and Communication (PEC)

The PEC group, undertake engagement and participation work on behalf of the KBSP and includes membership from a broad range of organisations including statutory and voluntary and community sector partners and other participation and engagement officers from across the city. The work of the group is directly aligned to the KBSP business plan priority 2, where our citizens are equal partners.

As with previous years, in 2021/22 the group worked with Somerset, South Gloucestershire, North Somerset and Bath & North East Somerset Safeguarding Partnerships to run a campaign aligned to the Ann Craft Trust National Adult Safeguarding Week. Work included the delivery of a week of webinars, and a variety of promotional resources and tools shared across the Partnership.

The group also supported the completion of:

- Participation in Education Guidance
- Domestic Abuse and Sexual Violence Forum Film
- Creation of City and Guild level 2 award in Advocacy
- Supporting the auditing of the A&S Police Call relating to DA

The group also works closely to support the work of the young people's shadow board including the formulation of *Are You Ok?* workshops and the shadow board Mystery Shopping audit exercise on the First Response Assessment Teams work. They have continued to support the work of the domestic abuse forum including the creation of a film and supporting the audit of the Avon & Somerset Police for more effective call handling relating to Domestic Abuse. The group also created a new City and Guild level 2 award in Advocacy for supporting victims and survivors of domestic abuse.

They also assisted with the recruitment for two parents to sit on the Child Protection Conference Development Board. Both had experience of children being on child protection plans and their conversations during meetings have resulted in the police confidential slot being removed from conferences and the creation of leaflets and virtual tours of conference spaces, including photographs of local bus stops, parking areas, entrances to the offices, and the meeting rooms to help other parents engage more easily and better understand the child protection process.

Our priorities going forward into 2022/23

In 2022/23 the KBSP will continue to deliver against the five priorities identified in its first strategic plan of 2019–2022, whilst consulting with partnering agencies, children and families and our local communities in the formulation of a new plan for 2023–2026.

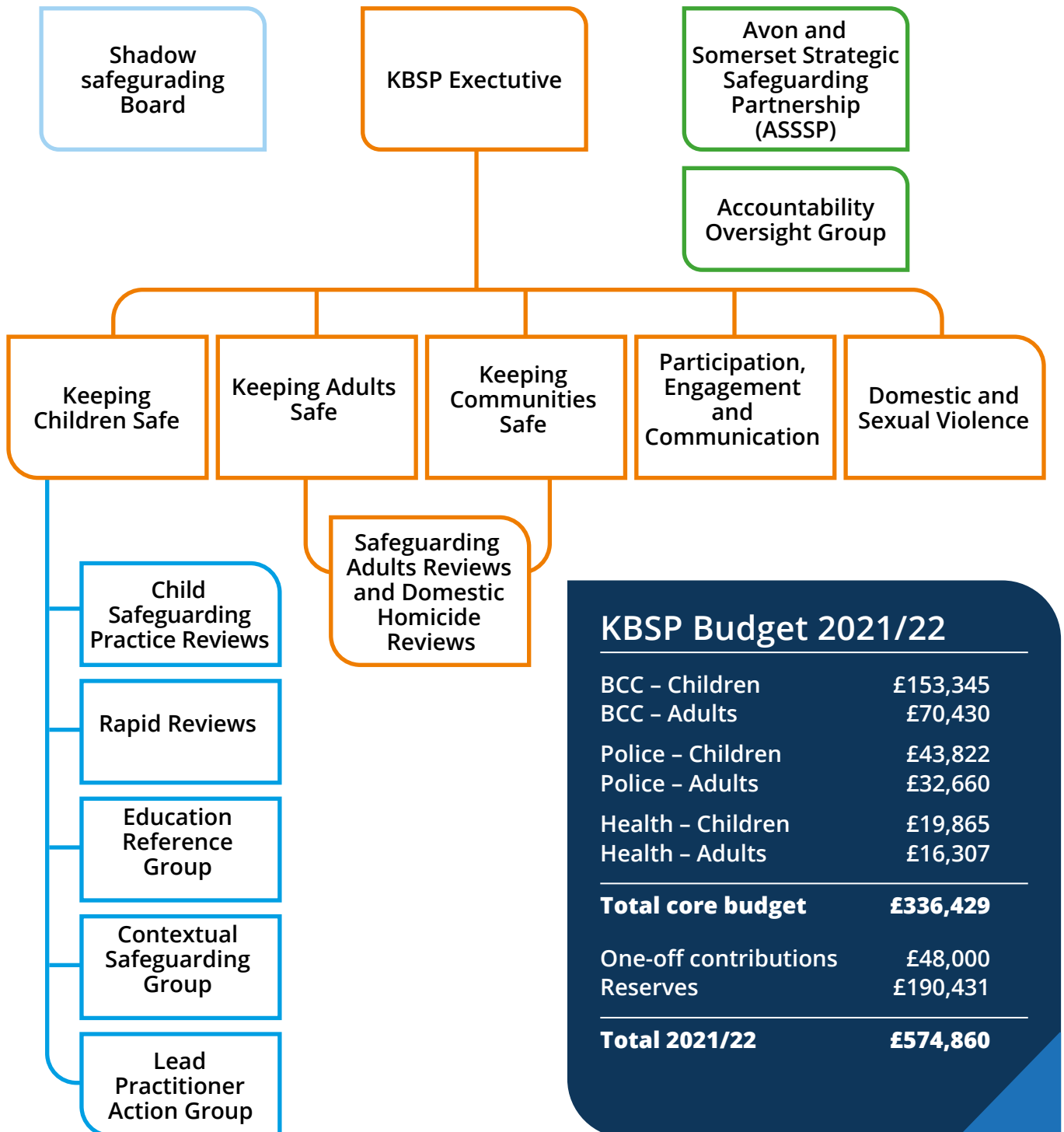
We continue to be informed by our partnership data, the outcomes from local and national reviews and draw upon existing participation work with organisations and community groups across the partnership, to understand what our citizens are saying about safeguarding and how partners are responding to the voice and lived experience of those who use our services.

This annual report was approved by the KBSP Executive on 12/12/22. In line with statutory requirements and best practice this annual report will be shared with:

- Child Safeguarding Practice Review Panel
- The What Works Centre for Children's Social Care
- The Chief Executive, Bristol City Council
- Director of Children and Safer Communities, Bristol City Council
- Director of Adult Social Services, Bristol City Council
- The Police and Crime Commissioner
- The Health and Wellbeing Board
- The Keeping Children's Safe Delivery group
- The Keeping Communities Safe Delivery Group
- The Keeping Adults Safe Delivery Group

Appendix 1

KBSP Structure and Budget



The KBSP Business Unit supports the work of the KBSP Executive and its groups. It consists of a business manager, a policy and projects officer, a participation officer, a projects officer, training officer, and business support administrators. The role of data analyst is currently vacant.

Appendix 2

KBSP Training and Development

Training Attendance

Figure 1: Course attendance data

During April 2021 to March 2022 the total number of professionals attending training was 909. The KBSP delivered courses covering a range of safeguarding topics these all include the lived experience from Bristol citizens, to ensure their voices and experiences are directly reflected in our training courses.

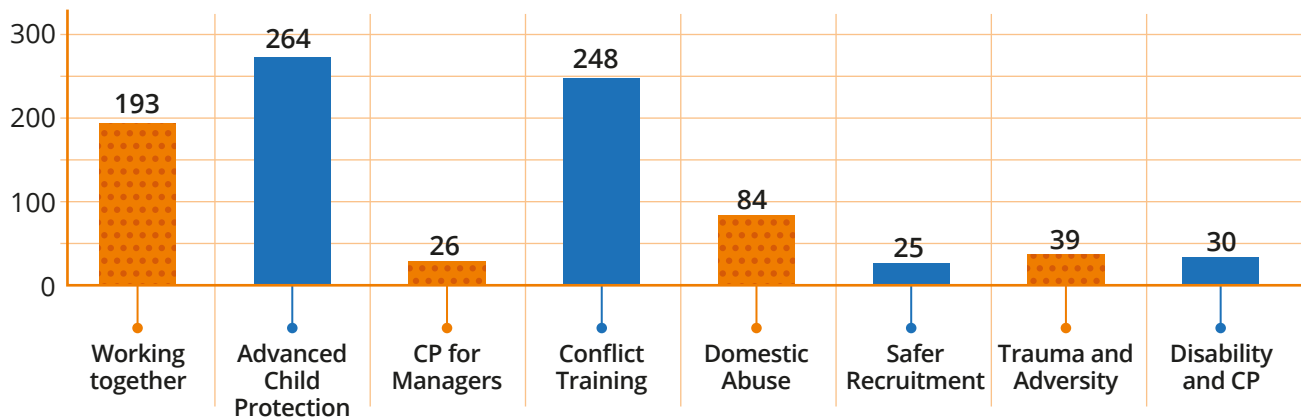
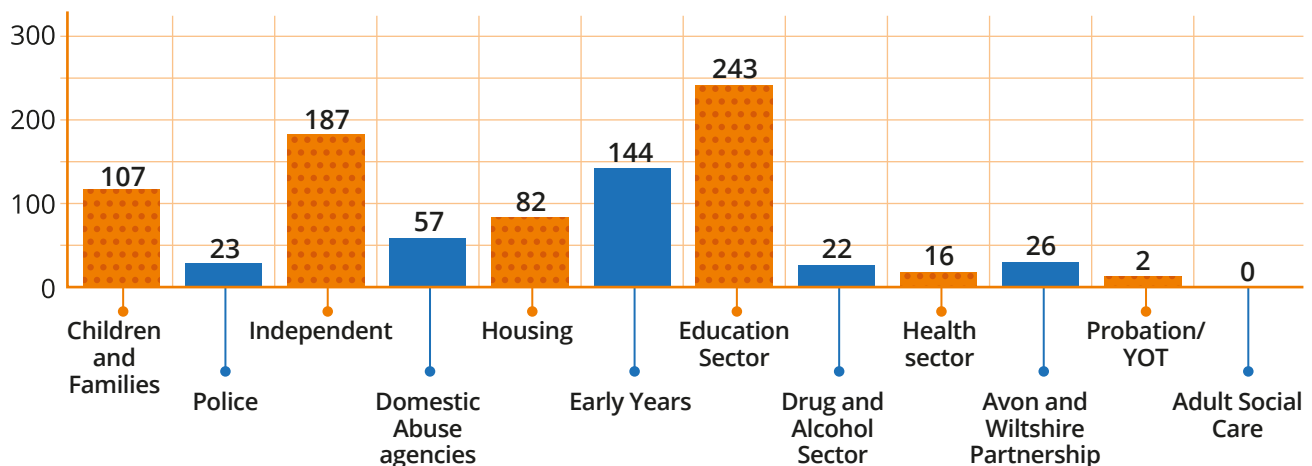


Figure 2: Attendance by agency data

The KBSP delivers and evaluates a high-quality multi-agency programme of learning opportunities that meets the development needs of the local children and adult workforce. These courses are attended by a variety of agencies including local authority social care staff, education, housing, police and voluntary and community sector organisations.



Training topics for 2021–2022 included:

- Introduction to safeguarding (Working together: our Shared Responsibility)
- Domestic Abuse
- Advanced Child Protection
- Safer Recruitment
- Child Protection for Managers
- Trauma and Adversity Awareness Training

The Partnership have also provided bitesize webinars on a range of safeguarding and community safety topics in keeping with the partnership priorities. These bitesize sessions are recorded so they are accessible for all. These can be found on the Keeping Bristol Safe Partnership website.

Topics for webinars 2021–2022 included:

- Recognising and responding to Child Sexual Exploitation (CSE)
- Be Safe (Harmful Sexual Behaviour)
- Disclosures of Child Sexual Abuse (CSA)
- Hate and Hate Crime
- Self-neglect in adults
- Gambling Awareness and Safeguarding
- Honour Based Abuse and Forced Marriage
- Safeguarding boys and young men
- Emotional abuse (in support of SAAW Stop Adult Abuse Week 2021)
- Safeguarding Under 1's/ babies
- Perinatal Mental health
- Online Safety
- Domestic abuse- Next Link (in support of VAWG 16 days of action)

- Domestic abuse – Opoka (in support of VAWG 16 days of action)
- Mind your language (working with exploitation victims/ survivors)

The Partnership are procuring a new electronic management system for training to enable expansion of the training offer for children, adults, and community safety. This will also ensure ease of booking for training delegates as well as a registered CPD area (continued professional development pool). This new system will be launched and go live in Quarter 1 of 2023.

The following comments were received by agencies who participated in KBSP training courses and webinars during 2021/22.**On equality and diversity:**

“The facilitator was very respectful, even asking for correct pronunciation of names to get them right.”

“The trainer was incredible, very knowledgeable, respectful and engaging.”

“The trainer was amazing keeping the interest of everyone and made sure it was inclusive and participative.”

“Trainer creates a great space to learn that is non-judgemental and encourages delegates to participate.”

“The trainer worked hard at involving everyone and was respectful to different views.”

"I am confident I can challenge inside my organisation and across organisations."

"Share KBSP training opportunities with other voluntary sectors."

"Look for silent signs (children and adults don't just tell us through their verbal voice)."

"I will keep a copy and refer to the threshold documents in all my work."

"Share valuable information with colleagues in my team."

"Ensure our setting has a more effective way of recording disclosures and the voice of the child/ family."

"I have greater awareness of how to spot signs and symptoms of abuse and be curious."

"I will use the knowledge for my weekly safeguarding meetings in my setting."

"Take the skills I learnt to help young adults and adults in the community and ensure I consider transitional safeguarding."

"I am confident I will know how to respond well when a child tells me they are being abused."

"Be confident (as the trainer mentioned) about breaking down acronyms and asking other professionals what they mean across agencies."

"Make sure I understand and am confident with the escalation policy and how to challenge."

"Continue to expand my knowledge on contextual safeguarding and how I can support this (the trainer was really passionate about this!)"

"Make sure all my staff are aware of the non-mobile baby policy."

"Update the safeguarding policy in my setting."

"Don't brush things off, be curious, respond and record."

"I have used the material already in my team meetings to get the message out there about curiosity and intervening early."

"Link in more with other professionals across the city."

"Think about the child not just as a student but their whole life story and what's happened to them."

"Follow up with reading the reviews and resources mentioned by trainer."

Appendix 3:

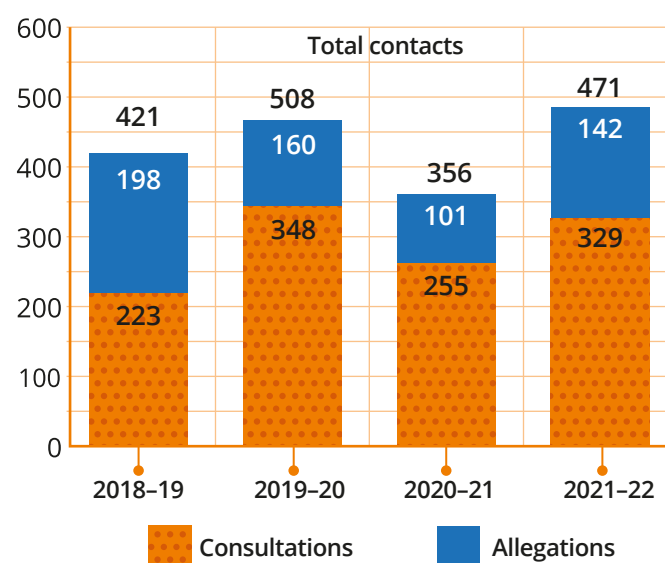
The Work of the LADO

The following extracted data is from the local authority LADO performance report for 2020/21 which included:

- 471 contacts to LADO of which 329 met the LADO threshold as defined in Working together to safeguard children and 142 consultations or lower-level concerns
- 160 Referrals – a decrease of 11% on the previous year
- 48% reported by Education sector
- 49% of referrals were in relation to physical abuse and 22% were for sexual abuse

Contacts to LADO

Fig 1: Nmb of contacts to LADO

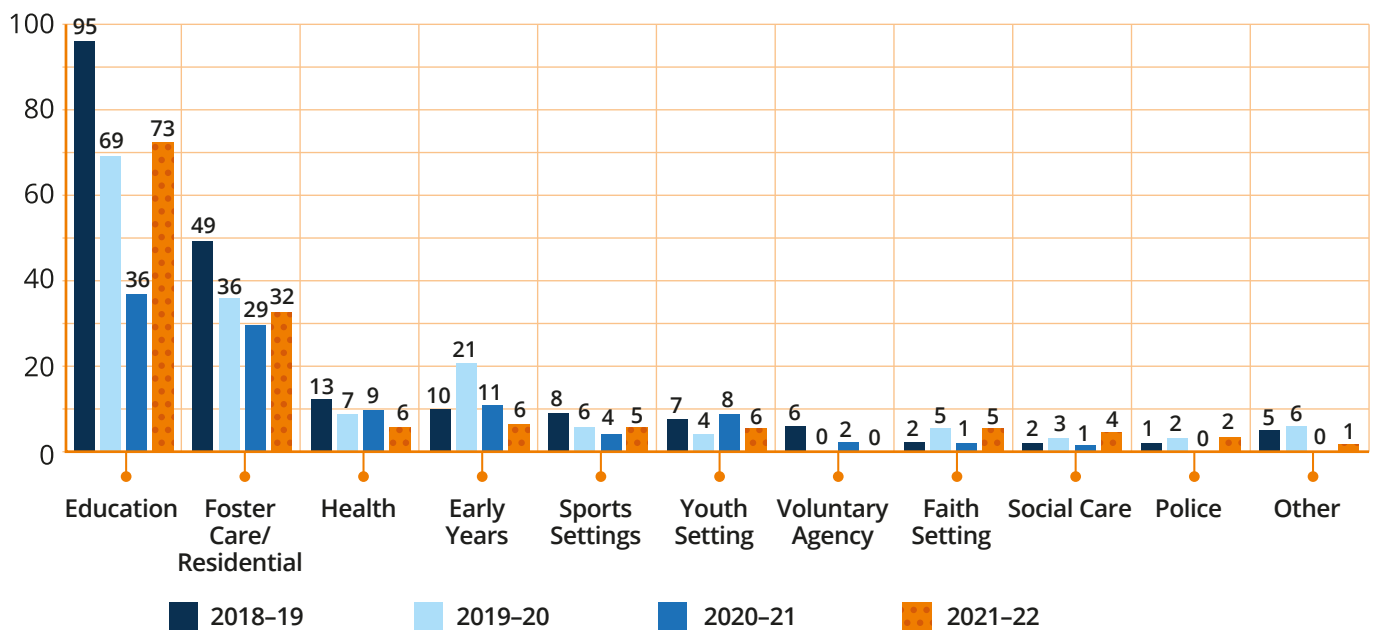


There were 356 contacts in 2021/22. We believe this reflects the national lockdown, in response to the Covid 19 pandemic, when most settings working with children and young people were closed.

It is therefore more appropriate to compare the data for the reporting year with that of 2019–2020. In comparing these two reporting periods there was a decrease of 18 referrals (11%) that met the LADO threshold. This could be explained by the fact that in March 2021 England came out of the third national lockdown and many organisations working with children and young people took some time to resume normal operation.

As with the previous two years in 2021–22 the highest number of allegations to the LADO were regarding education staff at 73, accounting for 52% of referrals. The next highest number of allegations were regarding foster carers and residential care workers; 29 referrals (23 %). As with previous reporting periods there was a low number of referrals regarding police staff, two (1.4%). This reflects the pattern both in the southwest region and nationally. A likely explanation for this is due to concerns regarding police being dealt with via Police Professional Standards and not being referred to the LADO as is required.

Fig 2: Agency for employment



Allegations

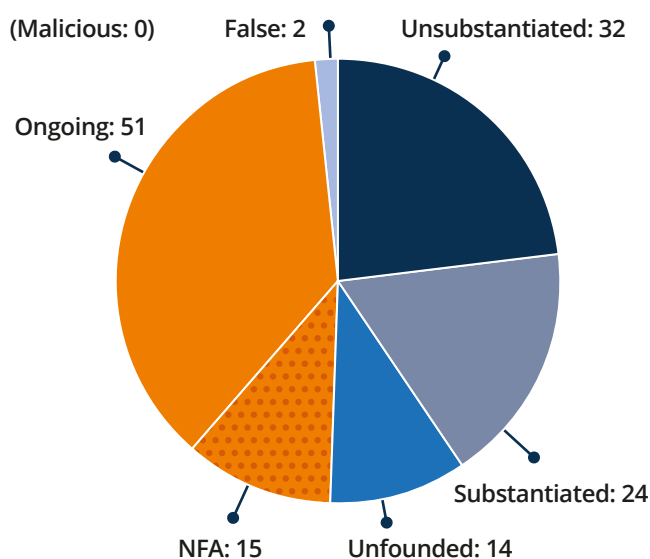


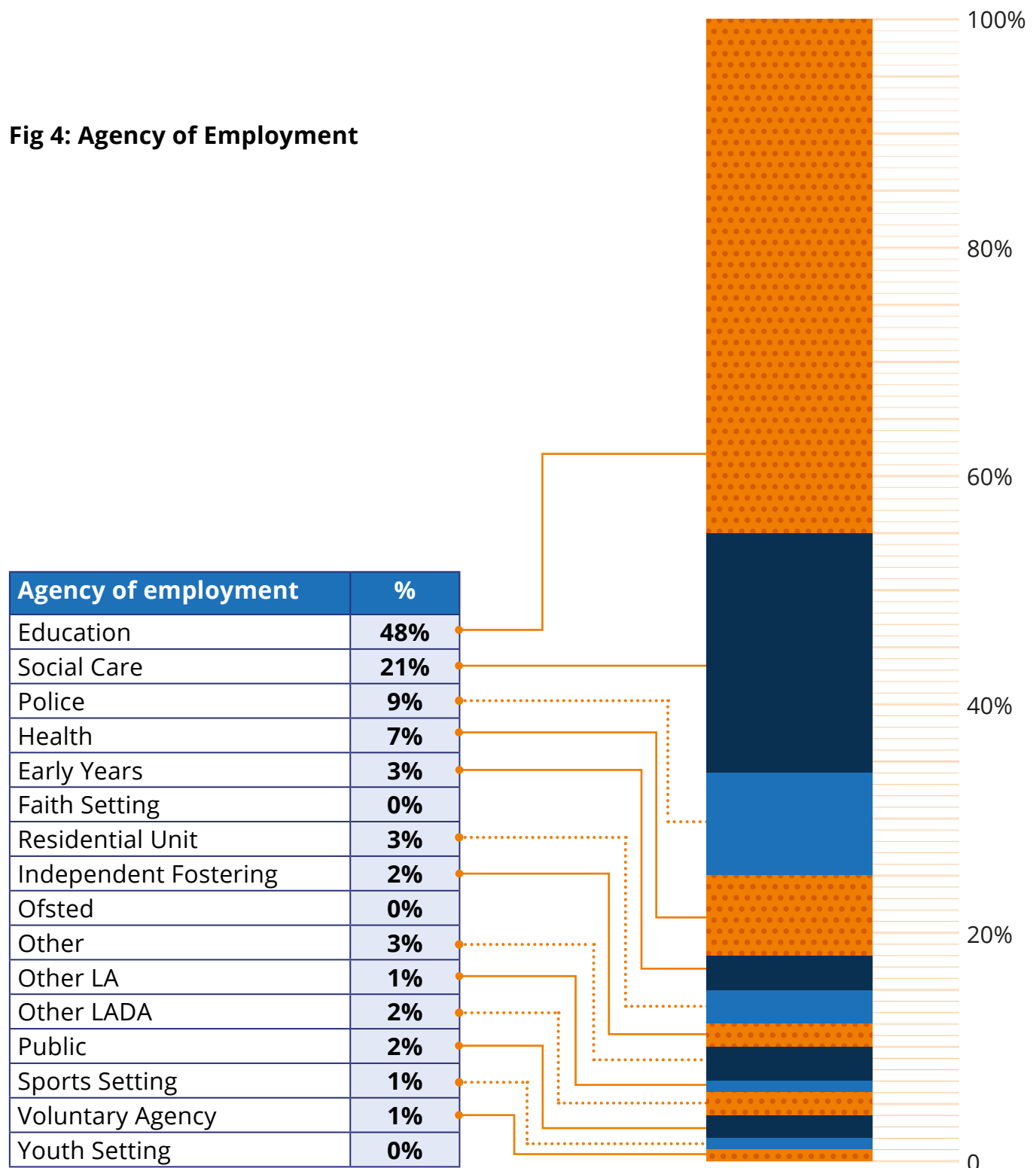
Fig 3: Type of allegation

Type of allegation in the reporting period as with previous reporting year the highest proportion of investigations concluded that the allegation was unsubstantiated 32 (23%) followed by substantiated 24 (17%). As with the previous three years there was a low number of investigations that concluded that allegation was false or malicious.

At the time of reporting a significant number of cases were ongoing 51 (37%), an increase of 50% from the previous year and 64.5% increase on the year 2019–2020. Of the ongoing cases 12 are criminal investigations.

In 2021-2022 as with the two previous reporting years the highest number of referrals to the LADO were regarding education staff 73, accounting for 52% of referrals. Historically, since reporting began education has been the agency with the highest number of referrals to the LADO and mirrors the pattern both in the southwest and nationally. This is due to educational settings being the largest workforce in the city having the most contact with children. In addition to this schools and colleges are obliged to comply with statutory guidance; Keeping Children Safe in Education which requires schools to report allegations regarding staff to the LADO.

Fig 4: Agency of Employment



Appendix 4: Safeguarding in Education Team

Section 175 of the Education Act 2002 puts a duty on Local Authorities to make arrangements for ensuring that their education functions are exercised with a view to safeguarding and promoting the welfare of children.

The Safeguarding in Education Team (SET) undertake the S.175 audit and work with educational establishments on the wider sections in s. 175 of the Education Act 2002 which places a duty on the governing bodies of maintained schools and FE colleges and that further legislation places similar duties on all other non-maintained settings including academies and free

schools (S. 157 of the Education Act 2002 and the Education (Independent School) Regulations 2014). The SET undertook the following activities in 2021/22 in its work to support educational establishments:

Complaints and concerns

The Safeguarding in Education Team have the duty to review practice where a concern has been raised about an establishment. These have come via a variety of different sources – the flow chart generally demonstrates the process of how these are responded to with setting's headteachers/ principal and their governance.



Table: Number of complaints and concerns responded to by the Safeguarding in Education Team

Academic year	Regulatory Bodies (Ofsted, DfE, EFSA)	Other agencies (Social care, Police, Health)	Complaints from parents/public	Total
2019–20	24	23	0	47
2020–21	37	1	2	54
2021–22	64	8	7	79

The outcomes for these interventions have generally found and concluded that safeguarding arrangements remain effective. In the small minority, support has been made available to the setting through additional training, recommendations, and advice. It is noted that themes have centred around:

- Child on Child harm (bullying, responding to harmful sexualised behaviour)
- Prejudice related incidents.
- Staff management of behaviour.
- Unmet Special Education Needs and Disabilities. Unresponsive leadership and management.

There have been additional resources for the workforce around these concerns in the Safeguarding in Education Team's training and CPD opportunities.

Setting Safeguarding Reviews

The Local Authority has been commissioned to carry out more in-depth reviews for a few settings in Bristol where concerns around safeguarding arrangements have been ineffective and requiring a higher level of support.

Type of establishment	Cause for concern	Outcome
SEMH Residential	Concerns raised from statutory agencies and Ofsted around Child-on-Child harm.	Pending
Alternative Learning Provider School	The setting was involved with two children subject to Rapid Reviews under Working Together to Safeguard Children.	Safeguarding arrangements effective, however wider systemic work required around SEN and Safeguarding.
Complex Need Special School	A significant series of anonymous complaints against the headteacher and concerns around system.	Safeguarding arrangements effective. Setting has action plan to work on and ongoing support as necessary.
Independent School	Inadequate judgements and significant concerns around leadership	The review forms part of formal ongoing intervention and support for the establishment.

Training

The training offer to education settings can be found on the Bristol Safeguarding in Education Website. The training offer is commissioned but is affordable. All income generated comes back to into the High Needs Block funding for vulnerable learners.

Training has been delivered virtually online since the pandemic. Training courses are adapted to reflect the needs of the workforce informed by the findings of the exercising of the Local Authority's s.175 Duties. It is noted that prior to doing the New DSL course, delegates are required to complete the Advanced Child Protection (level 3) multi-agency training through the Keeping Bristol Safe Partnership.

The following training is made available through the SET:

- DSL Training
- DSL Refresher Training

Courses required of the Local Safeguarding partnership (mandatory):

- Police Safeguarding Notification Briefing.
- Graded Care Profile 2

Specialist courses (optional):

- Adverse Childhood Experiences Ambassador course for Education (FREE)
- Tackling Child Exploitation in Education training.
- Tackling Domestic Abuse Training.
- Tackling Female Genital Mutilation Training.
- Training facilitated by other teams/ organisations:
- Undertaking investigations training.

- Safeguarding Governors Training
- Children Affected by Parental Offending (CAPO) – Barnardo's

Emerging need for 2022-23

The s.175 audit will be in a different format will incorporate changes that the workforce requested. The following areas will be explored and expanded through the Keeping Bristol Safeguarding Partnership Education Reference Group and operationalised through the SET.

- Review of the Police Safeguarding Notification Scheme considering new published statutory guidance around Domestic abuse and Forced Marriage.
- Develop a Critical Incident resource (guidance and training) for education settings.
- Work with Ofsted and the LADO around further CPD and resource to respond to Low Level Incidents.
- Develop a sustainable model of Safeguarding CPD and learning for Governing bodies.
- Create accessible 'easy read' versions of safeguarding related policies and complaints.

Appendix 5:

Local Authority children's Data

The analysis for children safeguarding data in this section of the annual report has used information provided by Bristol City Council for the Safeguarding Children's' Collection for 2021/22, together with data from the Department of Education's Local Authority Interactive Tool (LAIT) which provide easy access to a wide range of data related to children and young people sourced from various departments across government.

Measure	Bristol 2020–21 (%)	Bristol 2021–22 (%)	Bristol 2022–23 Q2 (%)	Current LA Quartile	Stat Nbr Average 2021–22 (%)	England Average 2021–22 (%)
Percentage of re-referrals within 12 months	23	26	23	D	21	22
Percentage of assessments completed within 45 working days	88	87	86	B	84	85
Percentage of initial child protection conferences held within 15 days of s47 commencement	81	85	83	B	77	79
Percentage of children becoming subject to a child protection plan for a second or subsequent time	21	25	16	A	24	23
Percentage of children subject to a child protection plan for at least 2 years at de-registration	0	2	5	C	5	4
Percentage of looked after children with 3 or more placement moves in the last 12 months	8	7	6	A	10	10
Percentage of children who have been in care for at least 2.5 years, who have been in the same placement for the last 2 years	73	77	75	A	70	70
19–21 year old care leavers – Percentage Total number in education, employment, or training (EET)	65	65	64	A	53	55

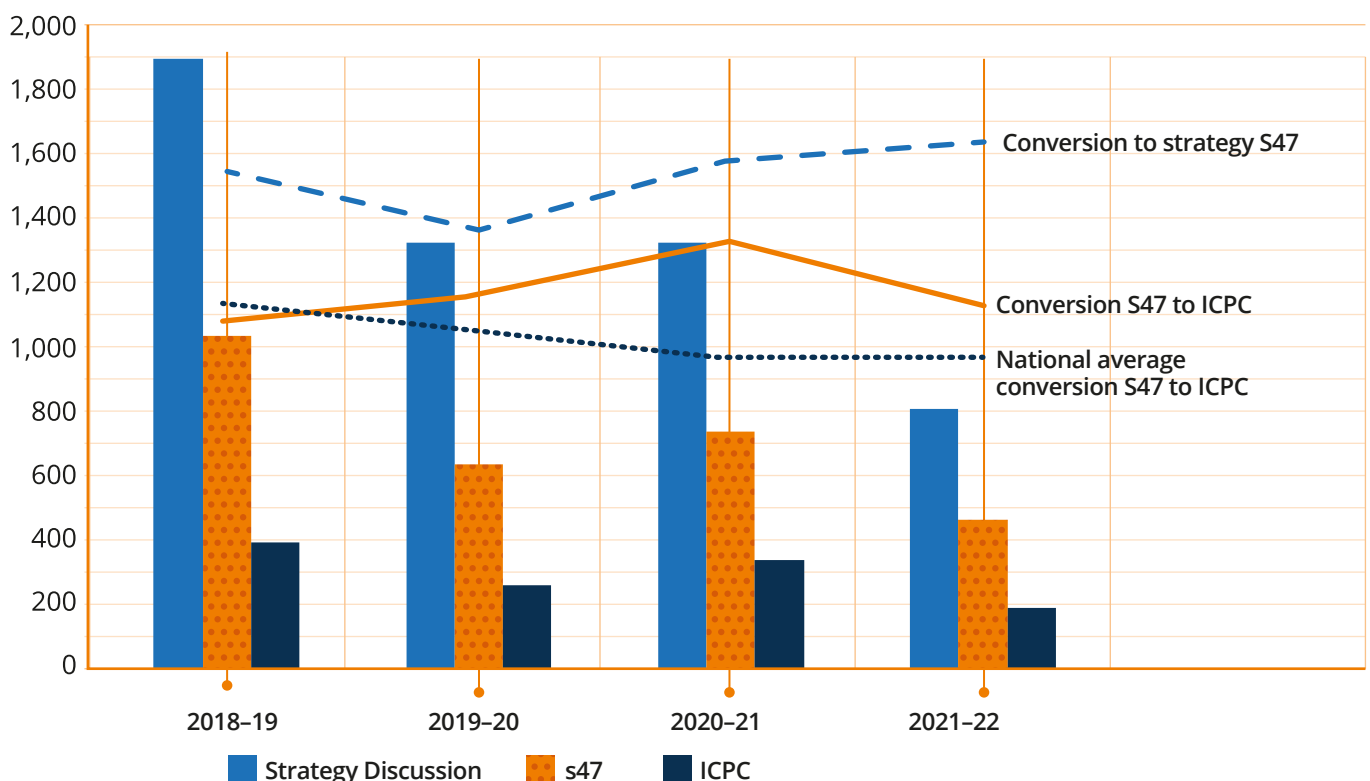
- 2021/22 showed continued general strong performance across key performance metrics for the children's social care system.
- Some indicators, most noticeably for repeat referrals and repeat Child Protection Plans, showed a declining position in 2021/22. This has been an area of focus in 2022 to ensure families are better supported to sustain the changes they have made. Performance for the first two quarters of 2022/23 have shown sustained improvement for these measures, with our repeat referral rate now approaching national average and our repeat Child Protection rate now lower than national average.
- Continued strong performance in both short and long-term placement stability indicators does not reflect the current pressure on securing placement sufficiency. This has been exacerbated by further increases in the increased

number of children in care and the increasing complexity of children's needs.

- Good outcomes have been maintained for our care leavers, including retaining our high rates of young people in education, employment, and training. Bristol saw a reduction in the volume of Strategy Discussions in 2020/21 coinciding with COVID-19, which continued into 2021/22. There has been an increase in Strategy Discussion in 2022/23 with an average of 136 per month, compared with 111 per month in 2021/22.

The conversion rate of Strategy Discussions to Section 47 enquiries or single assessment has remained high in 2022. In the calendar year 2022 to end of October 2021, 22% of Strategy Discussions resulted in No Further Action (reduction from 27% in 2021). This includes those children already open to social work teams where the service continues.

Fig 1: Strategy Discussions, S47 Enquiries and ICPCs (inc. conversion rates)



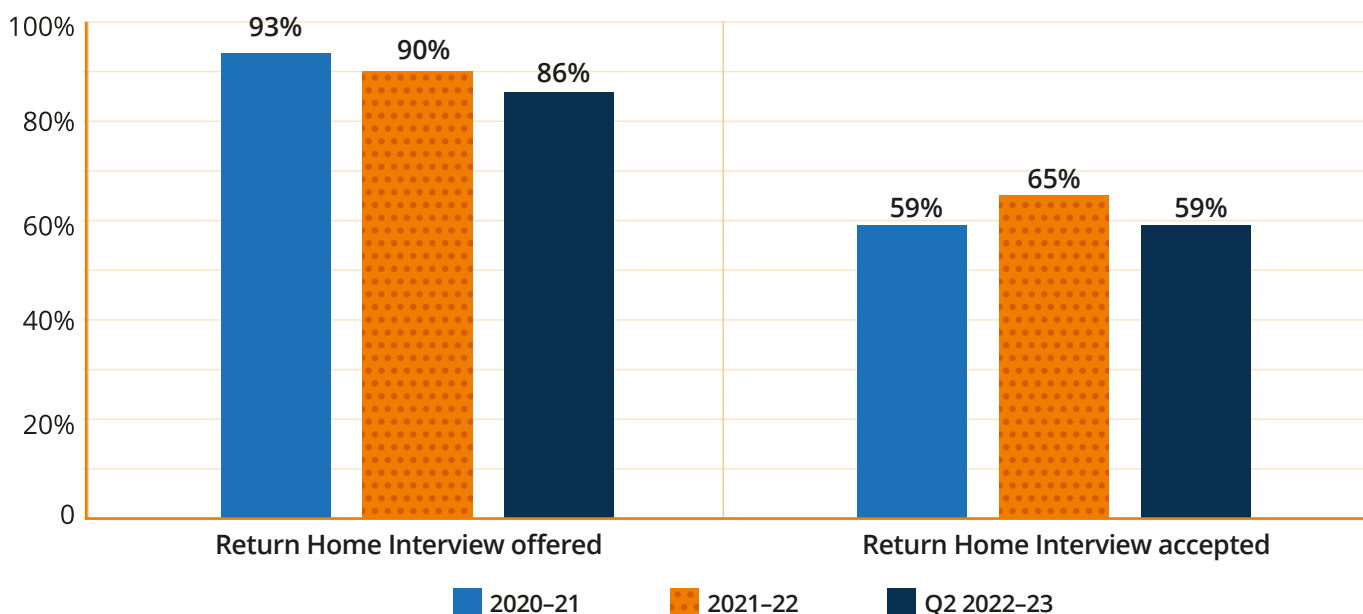
Bristol has maintained a relatively high conversion rate from Section 47 to ICPC. The rate for 2021/22 of 46% is significantly higher than the 2021/22 England average of 34%. In the first two quarters of 2022/23 there has been a decrease in the conversion rate in Bristol to 40% although remains higher than the national average and is in line with 2020/21. This is in line with our strategic intent to work with families at the lowest level of statutory intervention whilst being clear when there are concerns about harm.

Information sharing in child protection strategies has generally improved through the increased use of technology reducing the reliance on holding a series of calls. There have been some concerns raised by

the service and triangulated with multi-agency auditing about strategy meeting timeliness impacted by capacity within the police teams when investigations are led by non-specialist teams. This led to DCS escalation through the KBSP Executive Board. Improvement actions have been taken by the police and timeliness is improving.

Strategy meeting attendance is good with consistent engagement of police and health. Where invited, education and VCSE attendance and contributions are good. There are opportunities to improve the coordination of joint investigations particularly the involvement of social workers in Achieving Best Evidence Interviews (ABEs).

Fig 2: Missing from Home Return Interviews Offered and Accepted



In 2021/22 1,018 episodes were eligible for a Missing Return Conversation of which 917 were offered, a slight drop on 2020/21 performance to 90%. Of the 917 children offered, 598 (65%) were accepted which is an improvement from 59% in the previous year.

Where children have not been offered a missing return conversation this is generally because there have been multiple short episodes in short succession which will be covered by a single return conversation. However, the offer has also been affected by workforce sufficiency

challenges which have impacted the capacity of Area Social Work teams to consistently offer timely missing return conversations.

In response we have undertaken a review of our capacity and model for delivering missing return conversations and are in the process of procuring an external partner to deliver all missing return conversations and integrating this service in its entirety with our specialist exploitation service. This aims to increase the independence of the service offered and provide more consistency and wraparound support to young people who go missing.

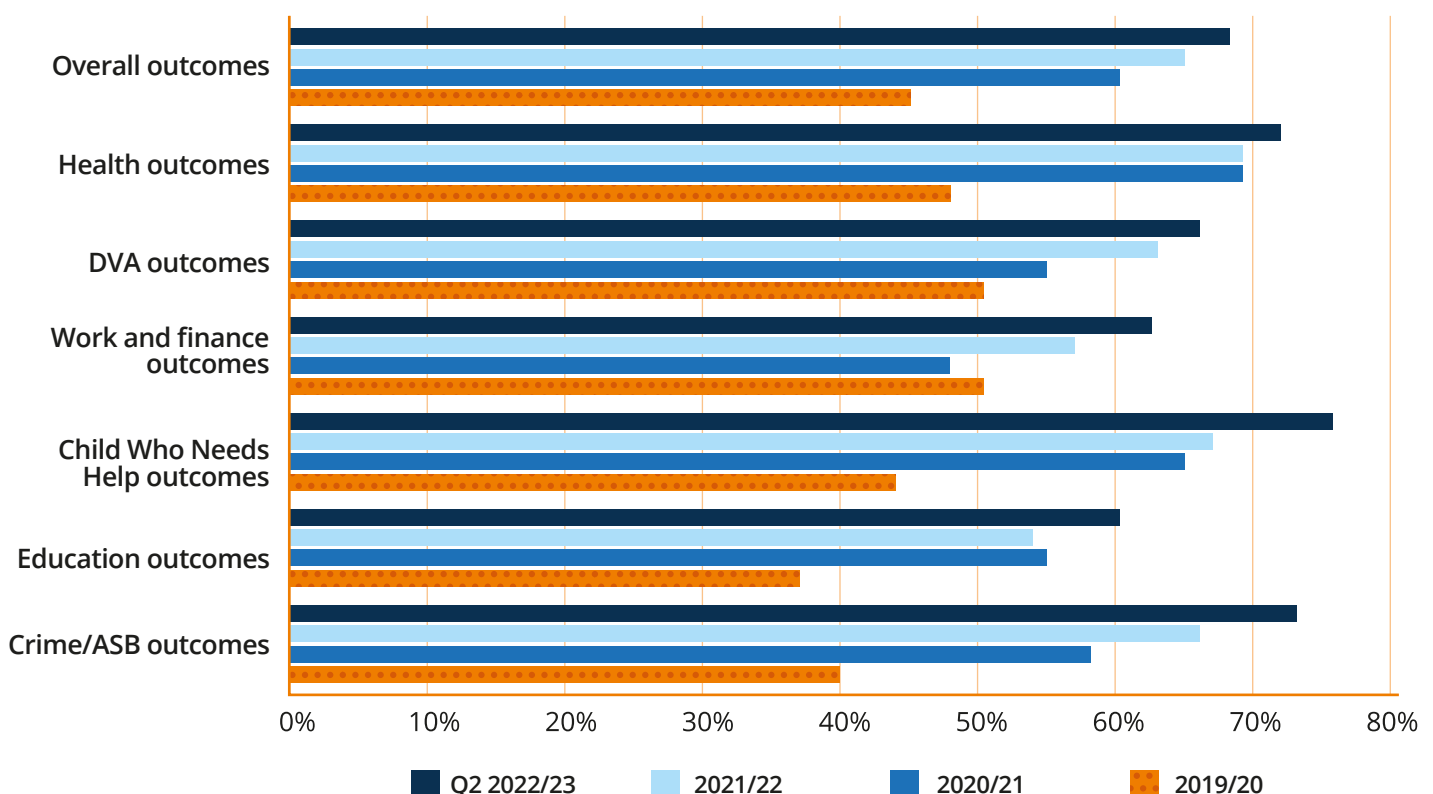
In addition, we are currently partnered with the University of Durham leading on the Building Safety programme for Contextual Safeguarding. In this we are working with children in care and their carers, as well as the professionals around them developing new approaches to improving

the missing response for children in care and addressing issues of disproportionality and inequality.

Early Help and Edge of Care

- We have continued to invest in early intervention across our integrated localities (which include Children's Centres, Team Around the School, Targeted Youth Services, Early Help and Edge of Care Services). Our multi-disciplinary Families in Focus and other early help teams have continued to deliver throughout the pandemic, working with over 900 children and 600 adults at any one time.
- Referrals to Families in Focus have increased and remained high throughout 2021/22 and into 2022/23, consistently over 250 referrals per quarter, with over 250 families open to Families in Focus at any one time.

Fig 3: Early Help Family Outcomes Achieved



- Weekly multi-agency locality meetings enable discussions and review of children and decisions to be made about how best to meet the child and families presenting needs. This includes families open to children's social care who are stepping out to early help.
- Our Strengthening Families teams work with families with children ages 10+ on the edge of care delivering intensive and longer term interventions. The caseload has been significantly increasing since January 2022 rising to 298 by May 2022 compared with 221 in May 2021.
- In 2021/22 Strengthening Families Team worked with 550 families which included 963 children. Only 36 of the 963 children have since entered care. 6 of these were due to Remand; 2 were already in care; 2 were aged under 10.
- Early Help services continue to monitor their impact via delivery of objectives within Family Outcome Plans. There has been an improving trajectory in achieving agreed family outcomes:
 - 68% of overall agreed family outcomes being achieved in 2022/23, from 65% in 2021/22, 60% in 2020/21 and 45% in 2019/20.
 - Improved outcomes have been made across all domains in the 2021/22 and the first 2 Quarters of 2022/23, with a success rate now between 60% and 75%.
- Significant gains have been made for employment and finance outcomes which were the most difficult to achieve with families. Following joint work with Adult Learning and Skills, this domain has increased from 48% in 2020/21 to 63% in 2022/23
- The most challenging area for families to achieve improvement is school attendance, although this has improved to 60% in the first 2 Quarters of 2022/23

Bristol has secured £4.5m to implement Family Hubs and the Start for Life Programme (2022-25). The programme's core objective is to improve access to integrated universal and early help family services, including Start for Life services, in areas with the highest levels of deprivation and disproportionately poor health and educational outcomes. The aim is to provide support as early as possible to enable improved outcomes for the whole family.

- A multi-agency steering group reporting to the KBSP Executive is in place to oversee this work and the delivery plan is being developed. Key milestones for the three-year programme include the establishment of a Parent Carer Panel and the publishing of the Start for Life offer by April 23, and the opening of three Family Hubs by June 23.

Front Door and Assessment

Measure	Bristol 2020-21	Bristol 2021-22	Bristol 2022-23 Q2	Current LA Quartile	Stat Nbr Average 2021-22	England Average 2021-22
Rate of referrals per 10,000 children (<i>rate</i>)	351	374	377	-	658	538
Percentage of referrals which were within 12 months of a previous referral (%)	23	26	23	D	21	22
Percentage of which resulted in no further action (%)	12	13	13	D	8	8
Percentage of which resulted in an assessment and the child was assessed not to be in need in the year (%)	30	26	-	B	23	29
Rate of assessments completed as a rate per 10,000 children aged under 18 years (<i>rate</i>)	307	346	344	-	616	533
Percentage of assessment timeliness 1: within 10 working days (%)	14	13	16	A	14	13
Percentage of assessment timeliness 2: within 45 working days (%)	88	87	86	B	84	85

- Contacts to the front door (First Assessment) have remained consistently high as we have exited the pandemic, with partners and members of the public continuing to use the front door to share their concerns about children, to request early help and support for families, and to request information from us: there were 1,980 contacts per month in 2021/22 and 2022/23 compared with 2,125 contacts per month in 2020/21. This reduction relates to improved joint triage processes with police. Contacts from schools have now returned to pre-pandemic levels, around 320 per month.
- Across the 2020/21 period, the front door (First Assessment) service realigned their structure and amended their processes to achieve improved efficiency, management oversight and timeliness of decision making. A RAG rating system was implemented and embedded in our performance reporting app, enabling improved oversight of our risk management.
- Children rated “Red” who require a referral to a children’s social care have been progressed within timescale (24 hours) with 89% compliance across the first 2 Quarters of 2022/23. Staffing

challenges, particularly for key decision maker posts (deputy team managers and early help coordinators) have resulted in some timeliness challenges, with 74% of decisions made in the time defined by their rag rating across the 21/22 & 22/23 Q1 & Q2 year to date.

“Amber” RAG contacts are particularly affected by this challenge, where more lengthy and complex enquiries are needed to understand the experience of the child and family. The management team undertake regular service deep dives to qualitatively understand timeliness across the system, and a wide-reaching review and development of MASH arrangements post-covid is currently being undertaken to consider how we can better use MASH to support more rapid decision making.

Decision making in the front door has been deemed to be “sound” (LGA Peer Review) with data and data sharing used effectively to support decision making. This was also the view of Ofsted in December 2021 Focused Visit, when they stated, “Strong, effective leaders have systematically strengthened practice and decision making at the front door despite the additional pressures of COVID-19.”

- A Daily Incident Review Meeting (DIRM) is now embedded within the Multi-Agency Safeguarding Hub arrangements to jointly review with police, IDVAs, safeguarding in education, and our voluntary sector domestic abuse support provider all high or medium risk domestic abuse crime incidents and all “child protection” incidents reported to police in the previous 24 hours. This enables swift identification and response to children at risk of harm or in need of

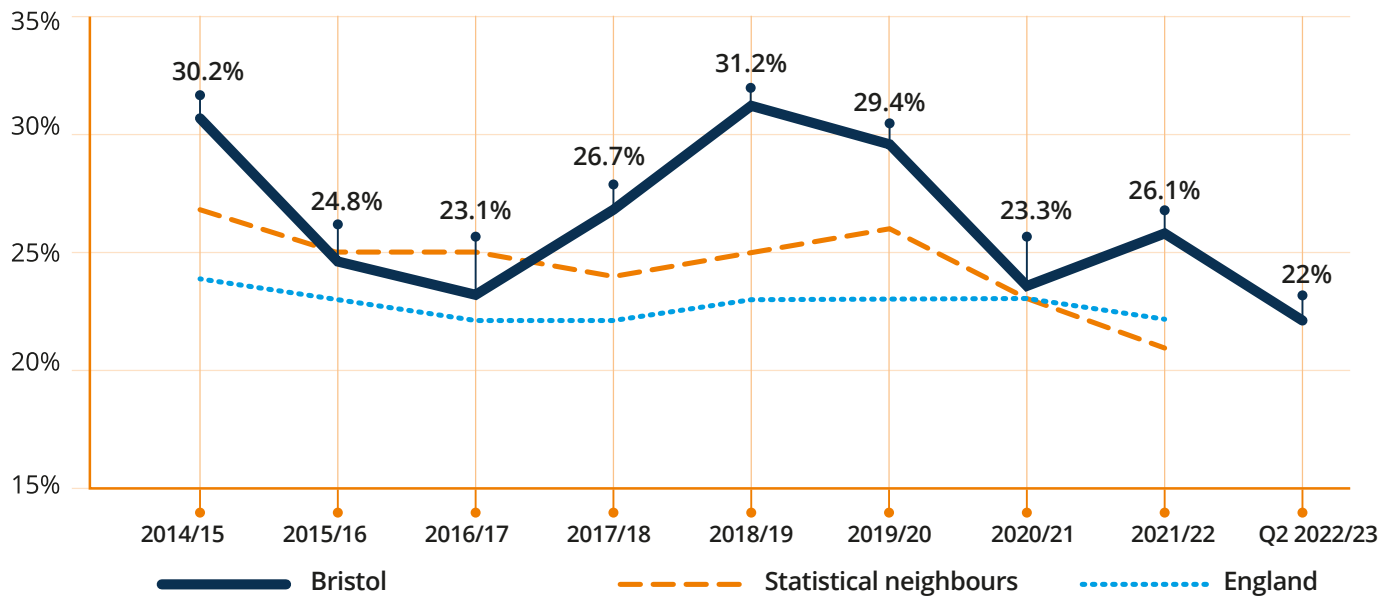
support pertaining to domestic abuse incidents with information shared rapidly across key agencies for the child to enable a coordinated response to the child’s needs.

- In large part due to the DIRM, police front door activity has reduced and the overall proportion of police contacts requiring no further action has reduced to 28% (from 40% in 2019/20).

“The Daily Incident Review Meeting (DIRM), multi-agency forum makes rapid and effective decisions to support children living in homes where domestic abuse is a concern to get the help they need at the time that they need it.”

Ofsted Focused visit, December 2021

- Referral rates to children’s social care have shown a slight increase in 2021/22 and 2022/23 from 2020/21 (300 per month from 275). This increase was expected and the referrals that we have received indicate that children are living with increasingly complex needs and risks, including in relation to their own mental health following COVID-19.
- The re-referral rate for the first two quarters of 2022/23 is 23%, which was a significant improvement from the increase seen in 2021/22 (26%) and returning to be in line national average (22%). This is reflective of the activity undertaken with a focus on closures and step downs.

Fig 4: Percentage of referrals which were within 12 months of a previous referral

- Schools and education settings continue to benefit from advice and support from the Team Around the School approach and the Safeguarding in Education Team. Contacts and referrals from schools have returned to pre-pandemic levels in 2021/22.
- Overall, good assessment timeliness has been maintained for children although we have seen a dip to 86% of children's

assessments being completed within 45 days. While this is still above national average, we know that areas of poorer performance have reflected areas that have experienced workforce pressures and vacancies.

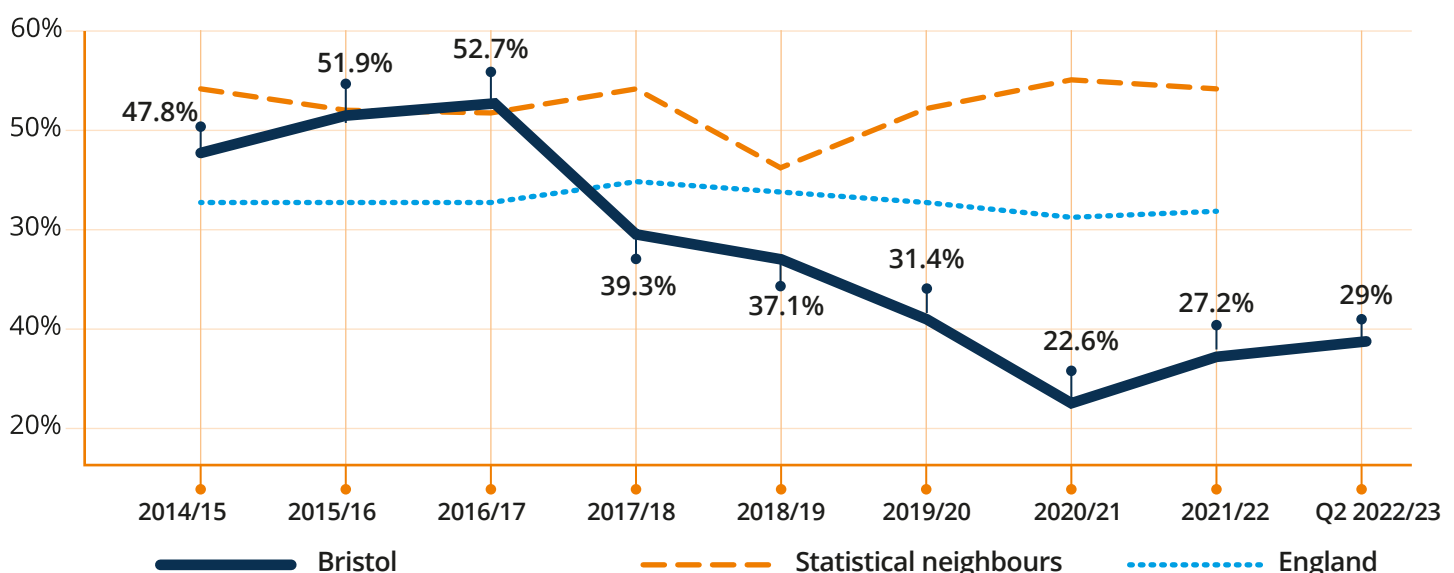
- The proportion of children seen during assessment has increased and is now consistently over 97%.

Child Protection

Measure	Bristol 2020-21	Bristol 2021-22	Bristol 2022-23 Q2	Current LA Quartile	Stat Nbr Average 2021-22	England Average 2021-22
Percentage of ICPC timeliness: within 15 working days	81	85	83	B	77	79
Conversion rate of children with S47 enquiries in the year to children with ICPCs in the year	43	46	39	B	36	34
Conversion rate of children with ICPCs in the year to children started CP plans in the year	95	97	95	A	87	87
Rate of children who were the subject of a child protection plan at 31 March per 10,000 children	23	27	29		54	42
Percentage of CP plans which were a second or subsequent plan	21	25	16	A	24	23
Snapshot 31 March – percentage 1 year but less than 2 years	17	8	7	A	18	14
Snapshot 31 March – percentage 2 years and over	2	2	0	A	2	3

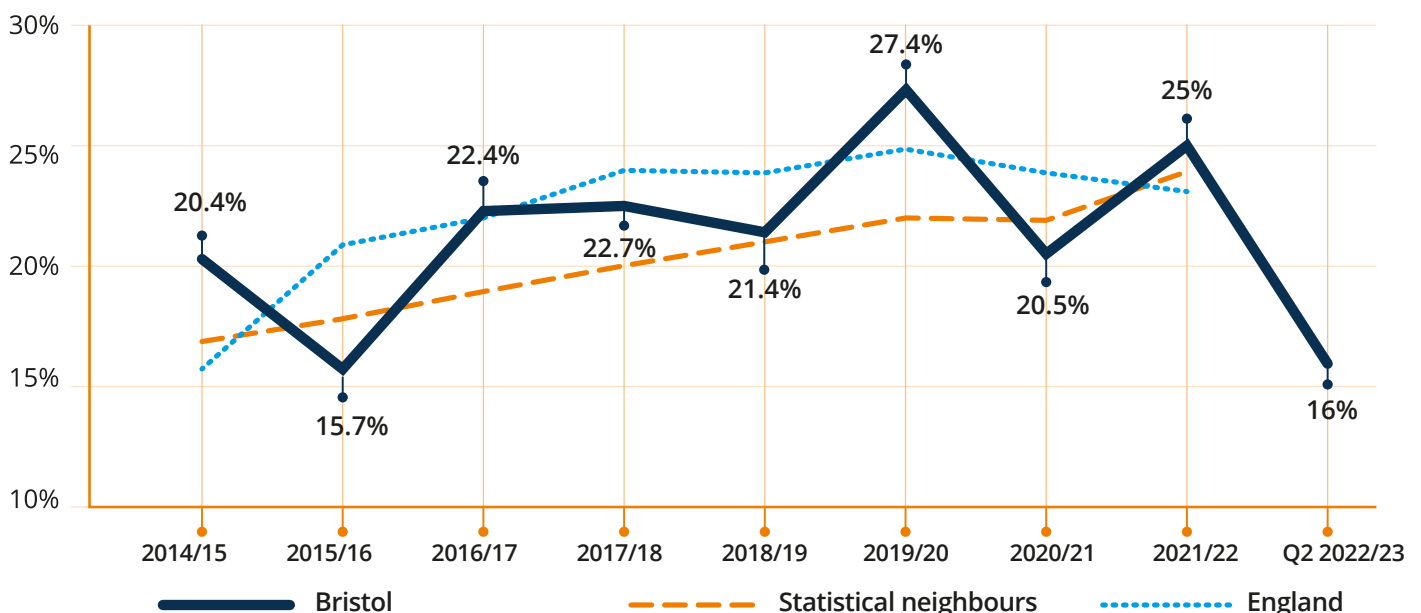
- Through investment in early intervention and by meeting need at the earliest point, the rate of Bristol children supported by statutory intervention remains low, particularly for Child Protection Plans

Fig 5: Rate of children who were subject of a Child Protection Plan at 31 March, per 10,000 children



- Following a focussed application of our threshold for child protection we have seen an expected increase of rate of Child Protection Plans, from 22 to 30 per 10,000 children in the last year (202 to 280 children). This rate is still low compared with England average and Statistical Neighbours but has now returned to an expected level.
- Repeat Child Protection Plans increased to 25% in 2021/22 which is above the statistical neighbour and national averages. Following focussed work in 2022 to ensure families are better supported to sustain the changes they have made, performance for the first two Quarters of 2022/23 with a repeat Child Protection rate is now 16%, lower than national average. We continue to apply management oversight to consider legal action if required for these particular children.

Fig 6: Rate of children who were the subject of a Child Protection Plan at 31 March, per 10,000 children



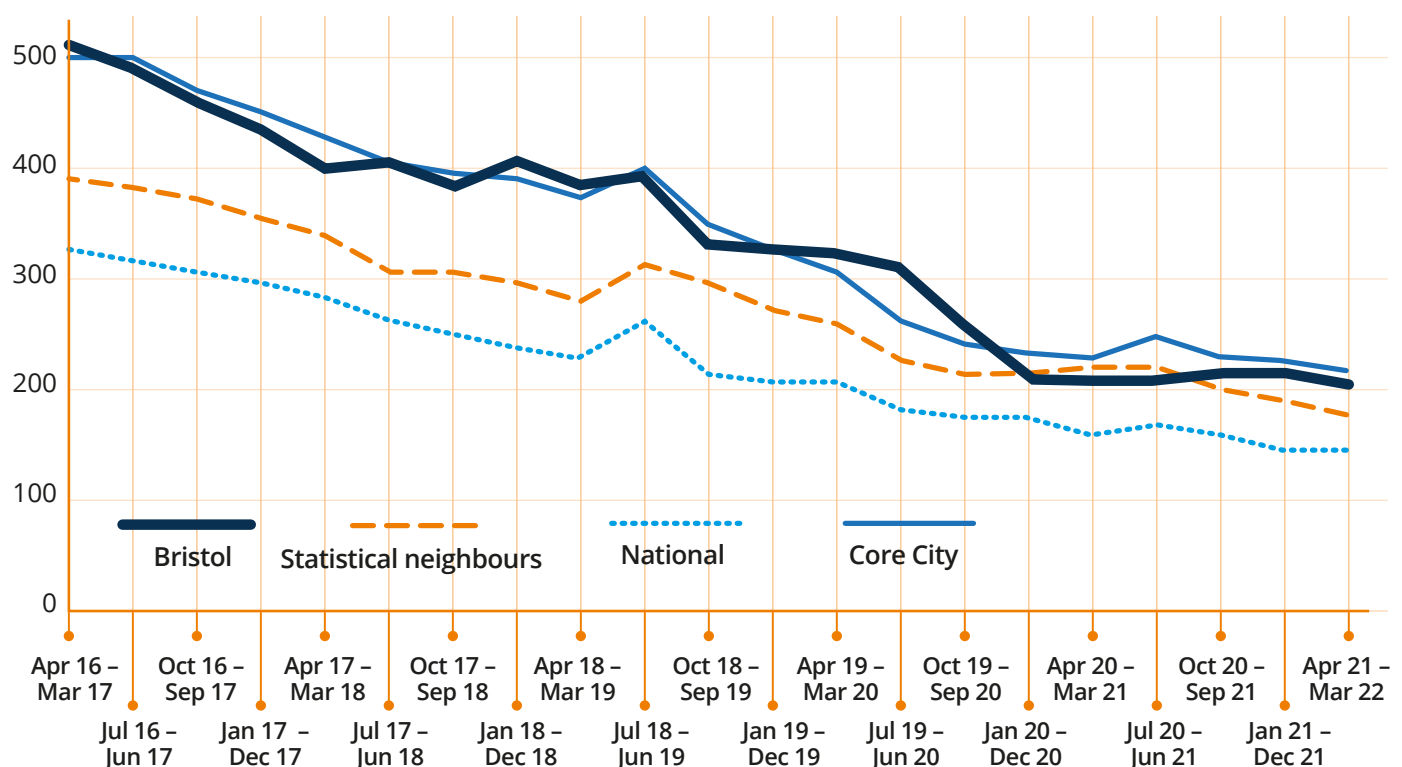
- Reduction in drift and delay is demonstrated by low numbers of Child Protection Plans being open longer than one year – with a 9-month management review focusing on impact and timely decision making for every child with a second plan. There are currently six Child Protection Plans that have been open for more than two years.
- Visiting timeliness for children with a Child Protection Plan has consistently remained over 90% for 21/22 and 2022/23. We continue to focus on ensuring our children are seen alone within their visits.

- The quality of our Child Protection Service has improved through 2022 as the team have begun to embed systemic approaches to practice, achieving safety for children through high levels of parental engagement. The work has been led by a multi-agency steering group that includes our 'Experts by Experience' parents. The improvements have included the introduction of systemic letters rather than conference

minutes; changes of venues; and more collaborative approaches to conference facilitation. The partnership is still working on improving the professional networks of support around children on Child Protection Plans to ensure that opportunities for recovery from trauma are facilitated. Recent developments such as the new children's service for recovery from domestic abuse contribute to these developments.

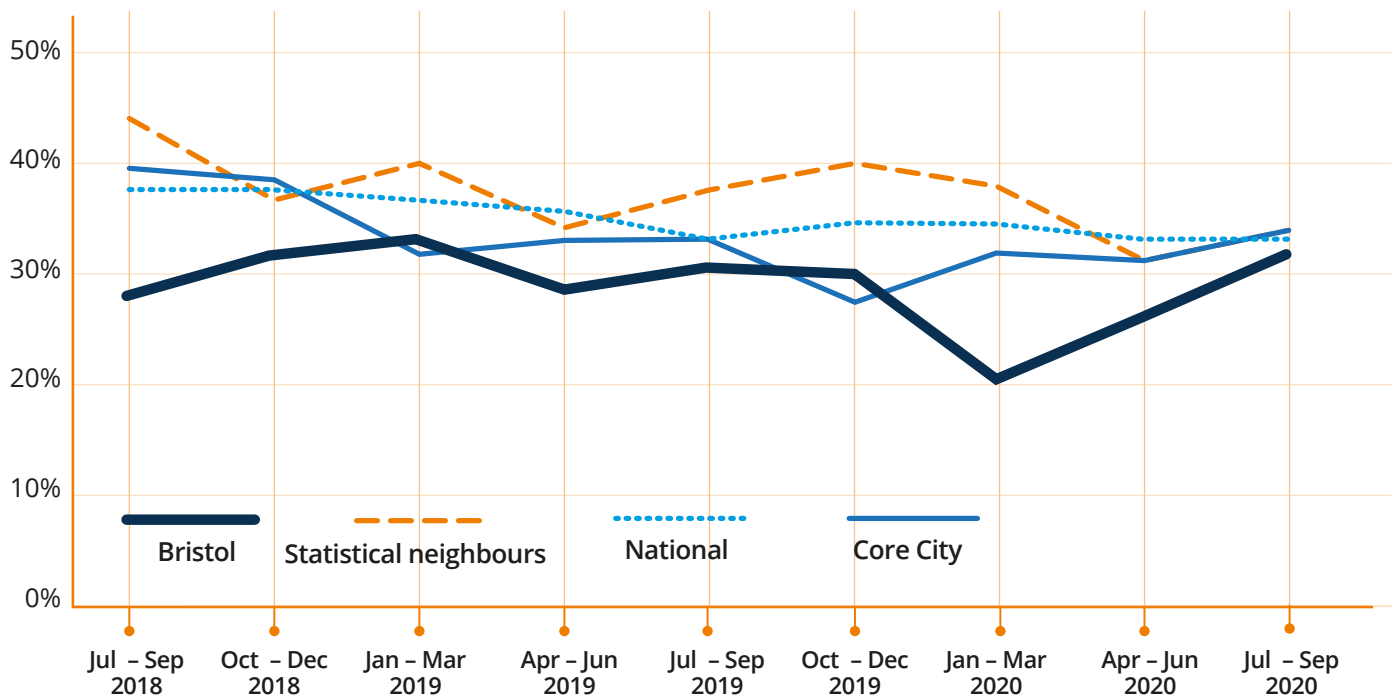
Youth Offending

Fig 7: FTE rate per 100,000 young people in Bristol, per rolling year, compared to the Core Cities average, National rate and YOT family average



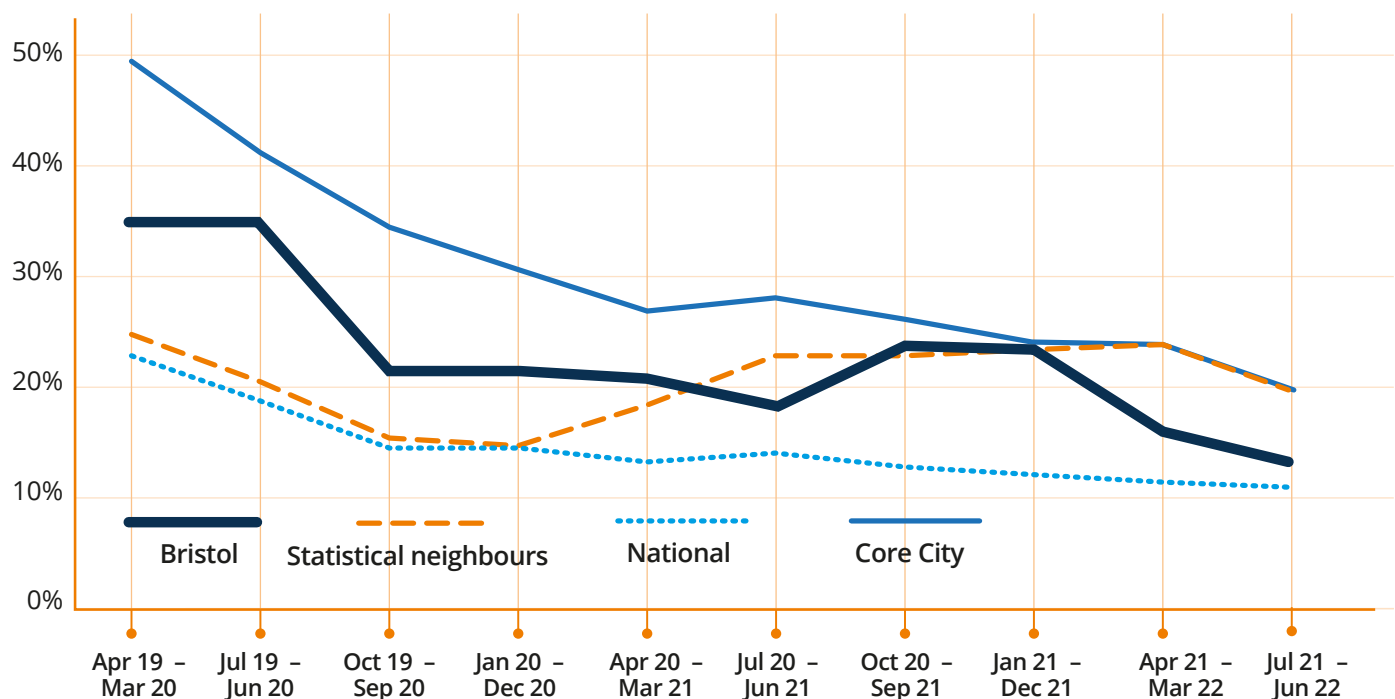
- There has been a steady decrease in the first time entrants rate to the youth justice system over the last 5 years, although this has levelled off in the last year. The first time entrant rate for April 2021 – March 2022 was 206 children per 10,000, a slight decrease from 207 in the previous year. Actions to further reduce the numbers of children entering the system include work with the police to divert children and a more coherent response to the delivery of prevention and diversion.

Fig 8: Binary reoffending rate (re-offenders/no YP in cohort) in Bristol compared to the Core Cities average and YOT Family average



- Performance in reducing reoffending is good, however there is significant time lag in the verified reoffending data. The latest binary reoffending rate for young people in the youth justice system Jul-Sep 20 was 31%, which is higher than the previous period (25.6%) but still lower than the national rate of 33%. Maintaining low case and relationship based, trauma informed practice contributes to strong performance in this area.

Fig 9: Custody rate per 1,000 young people for Bristol, Core Cities average, National and YOT Family average



- The custody rate of children (lates 0.13 per 1,000 young people) has have shown significant improvement in the last 2 reporting periods as closing the gap with the national average of 0.11 per 1,000 children. Work is in place to ensure robust packages of support are developed as an alternative to custody to continue to the trajectory of decline.

Fig 10: Proportion of young people in full-time ETE when they completed a Referral Order, YRO or DTO licence – Bristol compared to Core Cities average, and YOT family average

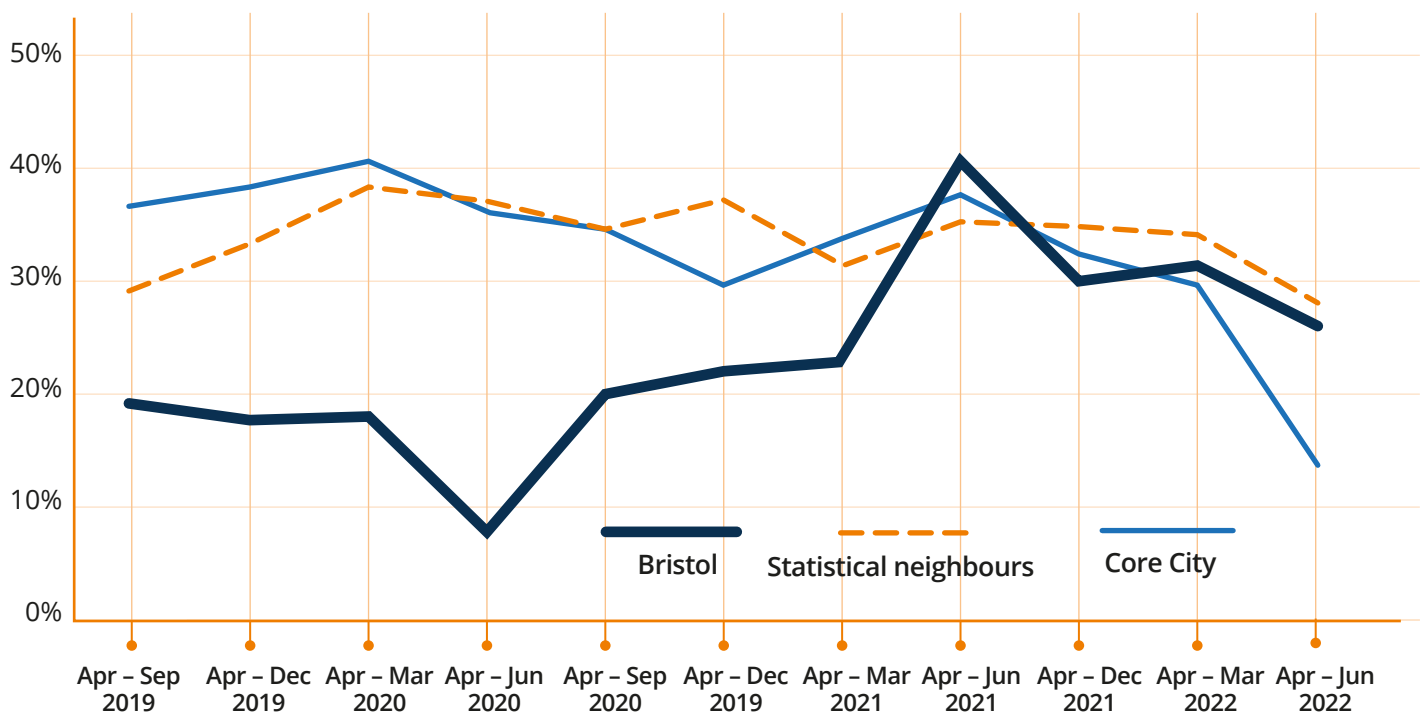
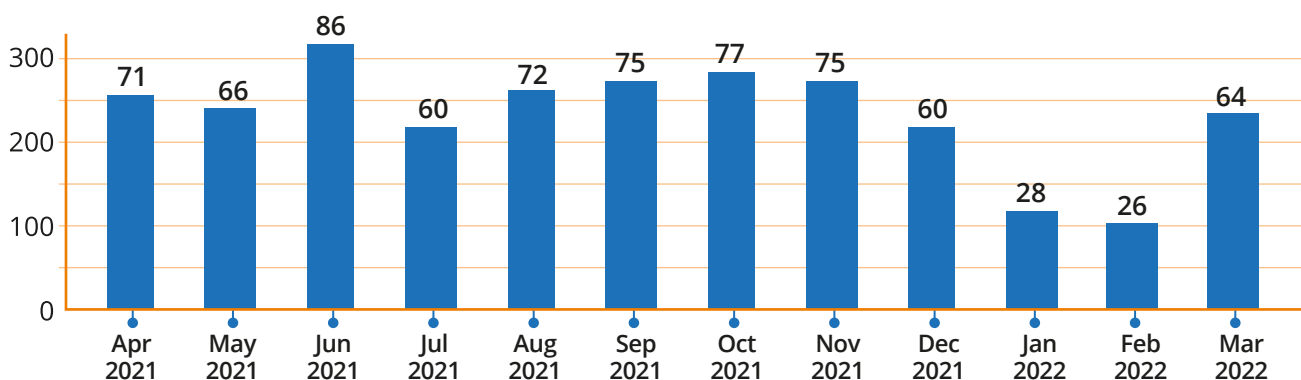


Fig 11: 2021 contacts to First Response where primary referral reason is extrafamilial harm



- 2021 contacts to First Response where primary referral reason is extrafamilial harm
- In the last five years Bristol City Council have identified an average of 123 children per year who are victims of child sexual exploitation and require Children and Families Service's involvement.
- 2022 has seen a decrease in serious violent crimes following a peak as we came out of lockdown in March 2021.
- 51% of children at risk of CCE in Avon and Somerset live in Bristol.
- New pilots launching this year with an expanded health offer for children affected by exploitation. New Clinical Psychologist embedded within Safer Options and specialist services offering case formulation.

Appendix 6:

Local Authority Adults data

The analysis for adult safeguarding data in this section of the annual report has used information provided by Bristol City Council for the period 1/4/2021-31/3/2022 and for comparison of the previous years recorded data for the same period.

Referrals

There were 5,033 safeguarding concerns raised in this period (*Fig:1*) in respect of 3,368 individuals, individuals may experience more than one type of abuse. This is a -5.8% reduction on the previous year however 2020-2021 was an unusual year due to the Covid pandemic so these figures must be considered alongside other years data. The highest type of alleged abuse recorded before triage is as *Fig 2*.

Fig 1: Referral data – referrals made and Concerns same period previous year, by start of month

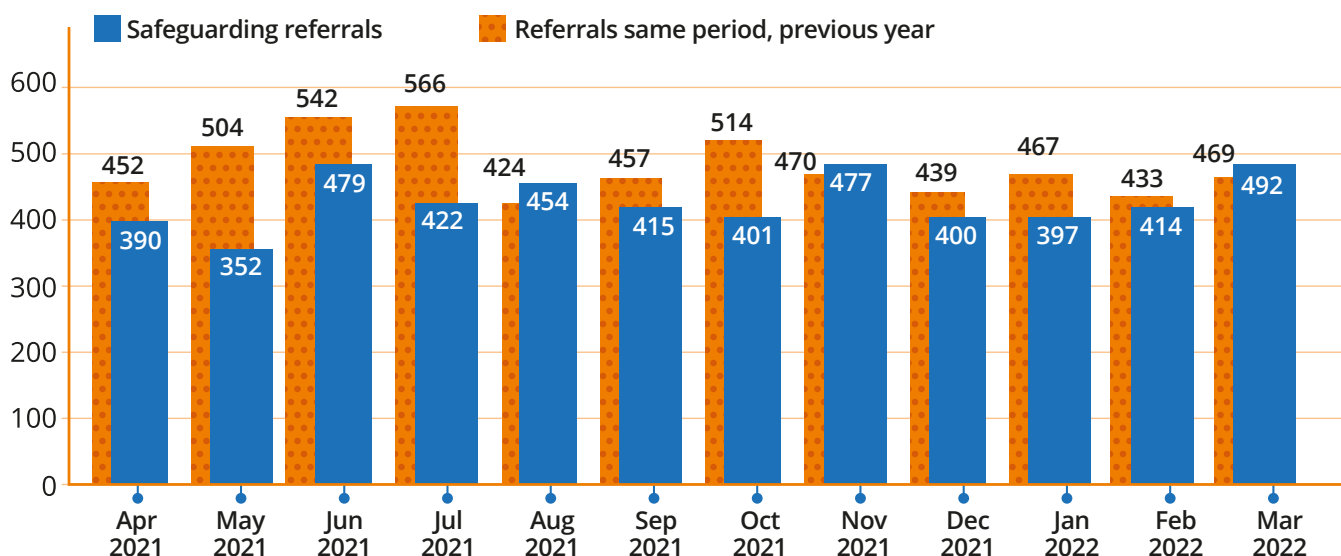
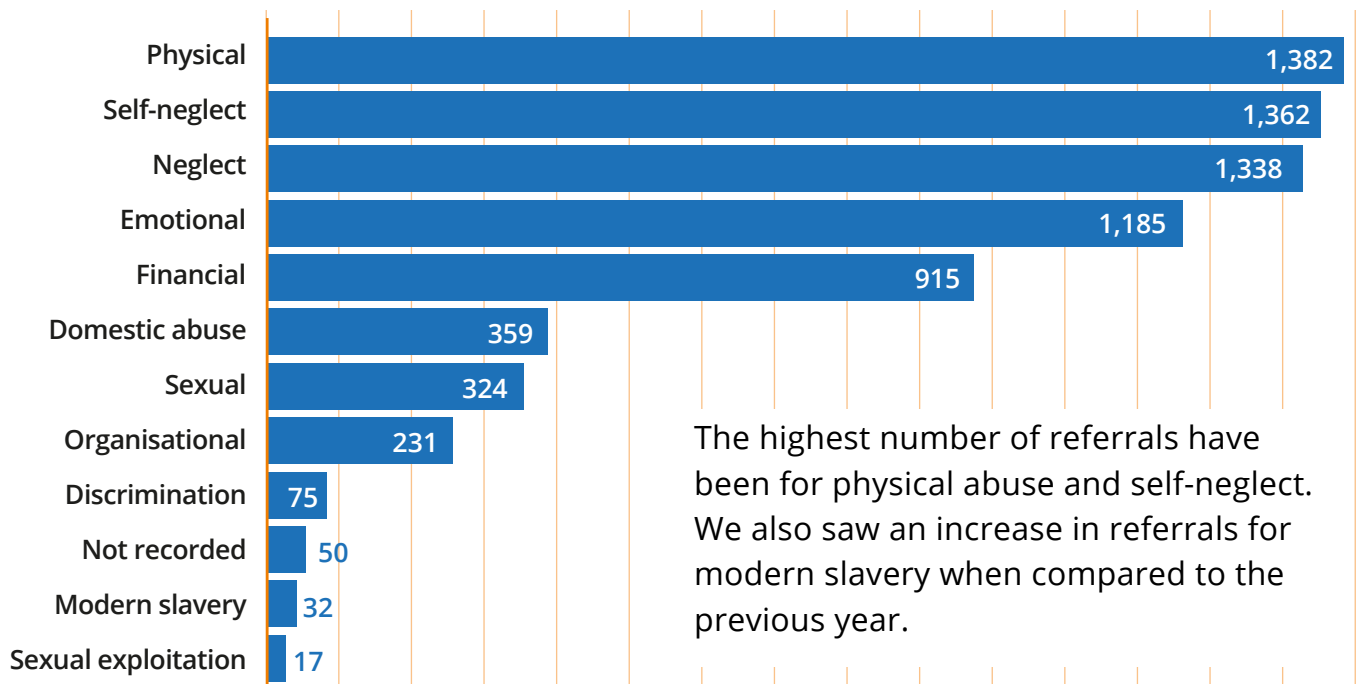
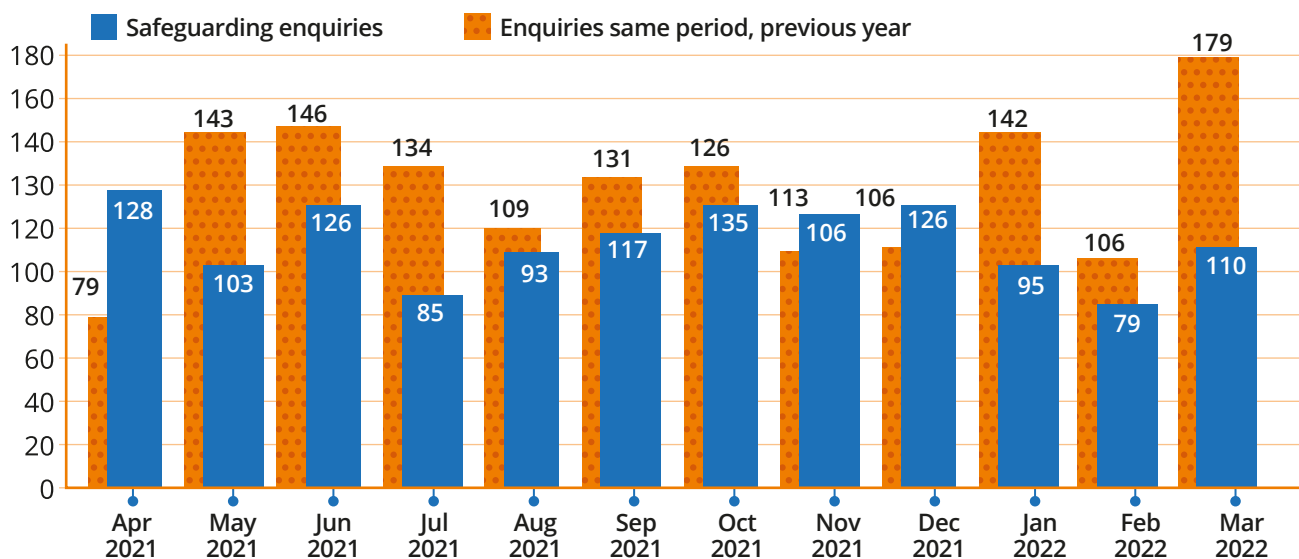
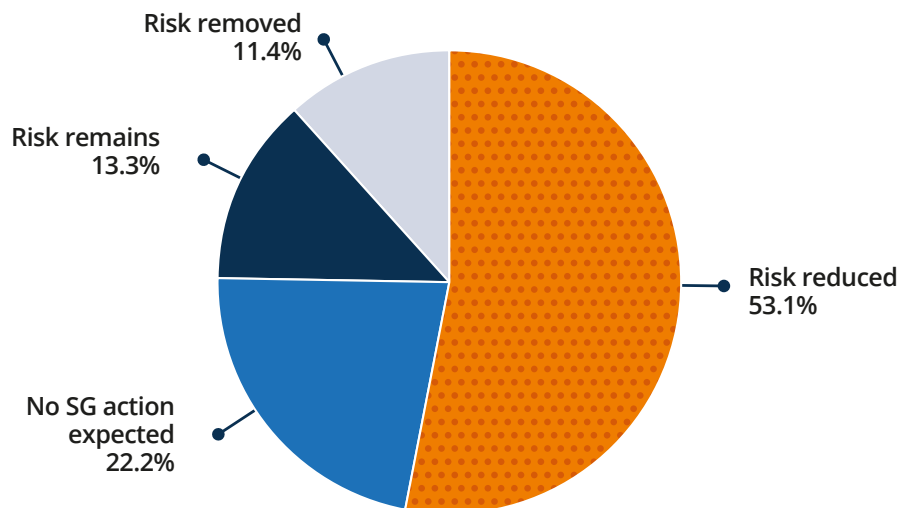


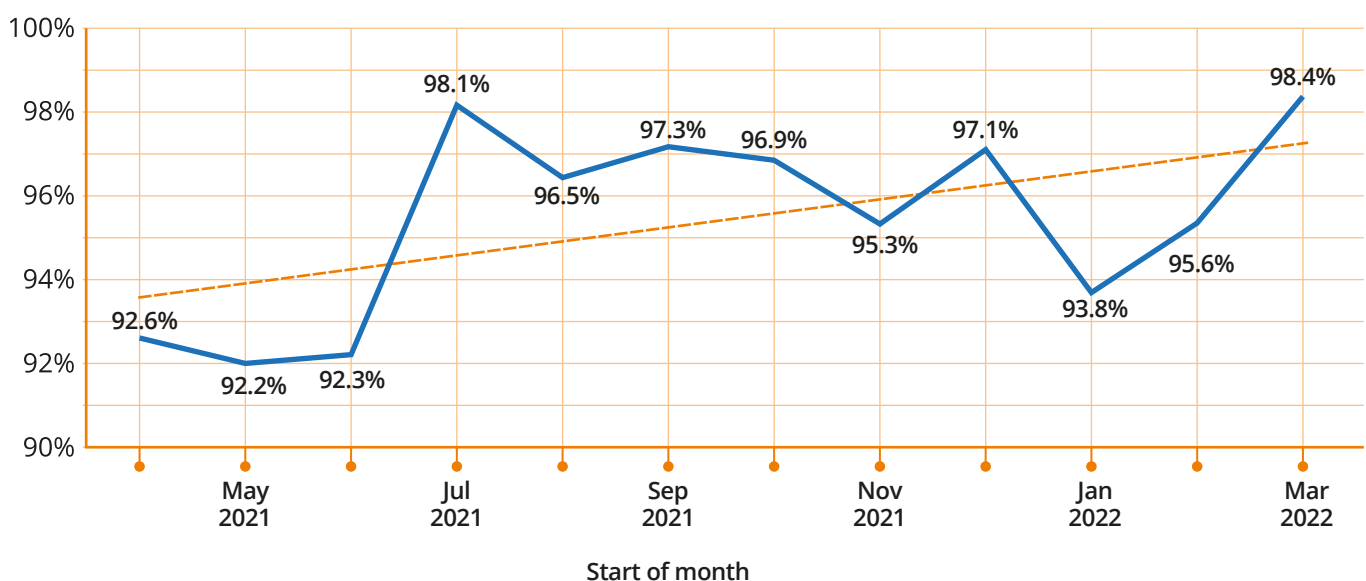
Fig 2. Referrals made by abuse type**Fig 3: Enquiries and SA enquiries same period previous year, by start of month**

A safeguarding enquiry is any action taken (or instigated) by a local authority (under Section 42 of the Care Act 2014) when there is reasonable cause to suspect that an adult at risk is experiencing, or at risk of, abuse or neglect

Following triage of the alleged safeguarding concerns 1294 Section 42 enquiries were undertaken in respect of 1111 individuals and 1211 completed (Fig:3) enquiries for March 2022 outcomes may be captured as outcomes in 2022 data depending on the date the enquiry started. Self-neglect being the dominant emerging issue during the Covid and post covid period (Fig: 4).

Fig 4: Enquiries by outcomes**Fig 5: MSP Achieving Outcomes – percentage of enquiries with a recorded outcome achieving desired outcome**

Over 95% of adults asked, agreed their outcomes had been met.



Enquiries and Outcomes

Risk to people was either reduced or removed in 64.5% of enquiries completed (*Fig:4*) and in terms of Making Safeguarding Personal 95.5% of peoples desired outcomes were met where recorded *Fig 5*.

Appendix 7:

Avon and Somerset Police Data

The data below was produced for the period of 2021/22 and provides the Constabulary's data submission for Bristol. The data covers the 12-month period 1 April 2021 – 31 March 2022 and the preceding 12 months for comparison.

Child Protection

The "Child Protection Crimes (excluding Domestic Abuse Crimes)" in the attached table are recorded crimes where there are child protection concerns (Child Abuse, Child Sexual Exploitation, Child Safeguarding), with this measure excluding Domestic Abuse Crimes where there are child protection concerns. The measure was considered by the former local safeguarding children boards to be a useful headline measure and includes crimes where the victim is a child, crimes where the suspect is a child and crimes where the child is an involved party. The measure also includes peer-on-peer crimes where both the victim and suspect are children. The measure includes non-recent child abuse allegations, regardless of whether the victim was a child or adult at the time of reporting.

The attached table shows that the volume of recorded "Child Protection" crimes in Bristol rose by 2.5%, or by 11 crimes, in the last 12 months compared with the previous 12 months, rising to 458 crimes. The 2.5% rise in Bristol is significantly below the 29.8% increase recorded across the force area.

Within that broad measure, there were increases in recorded offences in Bristol in Child Protection Serious Sexual Offences, which rose by 31.8% (or by 28 crimes), and non-familial sexual offences against children, which rose by 13.1% (or by 18 crimes). These rates of increase are well below those recorded force-wide at 63.6% and 60.6% respectively. Child neglect offences remained almost unchanged at 102 recorded crimes in the last 12 months, contrasting with the 30.2% increase across the force area.

Child Sexual Exploitation (CSE) is not a Home Office "offence type" and CSE offending is made up of a wide range of offences. As reported last quarter, the data in the attached report concerning the change in the number of CSE crimes should currently be disregarded. This is due to changes made to the way in which the CSE flag is attached to qualifying offences on police systems, to improve accuracy. The Constabulary introduced an automated process for newly recorded offences in October 2021 and applied this retrospectively to offences dating back to 1 October 2020. It will be October 2022 before 12 month rolling data can be accurately compared with data for the previous 12 months.

The overall number of child victims of crimes in Bristol rose by 170 victims to 1023 victims in the last 12 months, or by 19.9% compared with the previous 12 months.

This is significantly below the 37.1% increase recorded across the force area. The number of child suspects of crimes in Bristol in the last 12 months rose by 21.9% to 689 child suspects. This is well below the 31.6% rise experienced across the force area.

The number of recorded Domestic Abuse Crimes with a victim aged 16 or 17 in Bristol rose by 8 crimes to 62 crimes in the last 12 months. This represents a 14.8% rise, in line with the 14.9% increase recorded across the force area.

The number of child victims of recorded Race Hate Crimes rose by 2 victims to 36 in the last 12 months. The under reporting of all forms of Hate Crime is a significant issue and the prevalence will be far greater than is indicated by the number of child victims of recorded offences.

Missing Children

113 children were reported missing in Bristol in the last 12 months, one fewer than in the previous 12 months. 59 of these children were reported missing repeatedly, 12 fewer children than were reported missing repeatedly in the previous 12 months. However, the average number of occasions when children were reported missing repeatedly increased, resulting in a 48.5% increase in the overall number of missing children reports across the two periods.

The number of children missing from care in Bristol increased by 4 children to 16 children in the last 12 months. However, a large proportion of these children were reported missing repeatedly, with 12 of these children in having been reported missing repeatedly in the last 12 months.

Initial Child Protection Conferences

The Police were invited to 47 Initial Child Protection Conferences (ICPCs) in Bristol in the fourth quarter of 2021/22 and attended all 47. The Police attendance rate at ICPCs in Bristol through 2021/22 was 98.4%, with the police attending 180 of the 183 of the ICPCs.

Use of Police Protection Powers

Across the force area, the Constabulary used police protection powers under Section 46 of the Children Act 1989 on 320 occasions in the last 12 months, compared with 139 occasions in the previous 12 months. It is possible that a contributory factor to this increase is additional awareness of the powers by frontline officers because of officer briefings and the creation of new recording templates within the Constabulary crime and incident recording system, Niche. However, the Constabulary is aware that the use of police protection powers is increasing as children and young people are continuing to struggle with existing care or family placements. The Constabulary has raised this issue at the Avon & Somerset Strategic Safeguarding Partnership where agreement was reached to set up a Task and Finish Group. Case audits have found that in cases where police protection powers were used, their use was necessary, and that in each audited case they were used appropriately.

The reporting of the use of police protection powers at local authority area level is subject to data quality issues, whereby 20 records in the last 12 months were not linked to a beat code. There are 125 records of the use of these powers linked to beat codes in Bristol in the last 12 months, compared with 46 records in the previous 12 months.

Children in Custody

In the last 12 months, 301 children and young people aged under 18, whose latest recorded address was in Bristol, were arrested and brought into custody, 16 of whom were charged and detained. Of these 301 children and young people, 67 were arrested and brought into custody in the fourth quarter of 2021/22, 1 of whom was charged and detained.

Table 1 provides data for Bristol for the agreed police child protection measures (12 month rolling).

Missing children	Current	Previous	Change	% change
Missing children	113	114	-1	-0.9%
Missing children reports	358	241	+117	+48.5%
Repeat missing children	59	17	-12	-16.9%
Children missing from care	16	12	+4	+33.3%
Repeat children missing from care	12	11	+1	+9.1%

Safety and anti-bullying	Current	Previous	Change	% change
Child suspects of crime	689	565	+124	+21.9%
Domestic abuse incidents (excluding crimes)	1,566	1,712	-146	-8.5%
Domestic abuse crimes	3,195	2,890	+305	+10.6%
Domestic abuse crimes – victim age 16 to 17	62	54	+8	14.8%
Child victims of crimes	1,023	853	+179	+19.5%
Child victims or race hate crimes	36	34	+2	+5.9%

Child sexual exploitation	Current	Previous	Change	% change
Child sexual exploitation crimes	212	141	+71	+50.5%

Child protection	Current	Previous	Change	% change
Child protection crime (excluding domestic abuse crimes)	458	447	+11	+2.5%
Child protection serious sexual offences	116	88	+28	+31.8%
Non-familial sexual crimes – child victim	155	137	+18	+13.1%
Child protection crimes for cruelty and neglect of children	102	103	-1	-1%